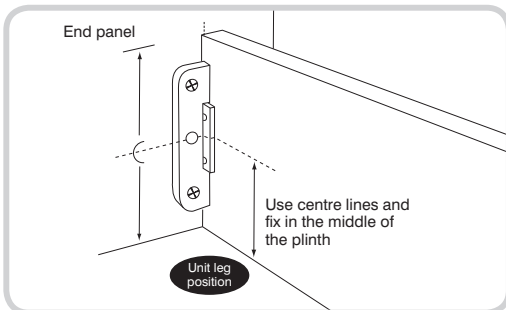
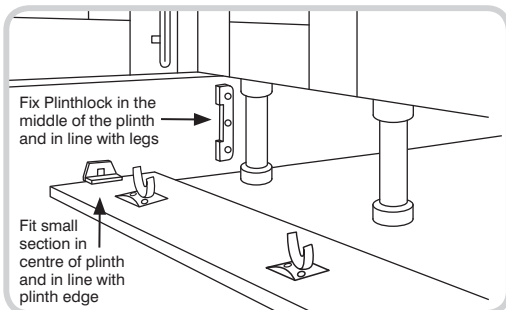
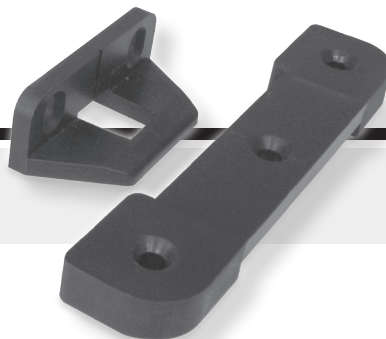


Instructions

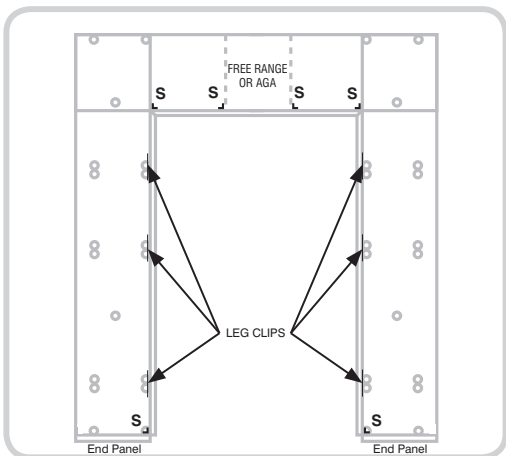


How to install

1. Scribe plinth and cut to correct height.
2. Measure height of plinth and mark height on inside of end panel.
3. Find centre of this height and fit large part of PlinthLock in place using the centre line marked on the PlinthLock as a guide. Make sure the Plinthlock is not fitted in front of the leg alignment.
4. Now look at the height of the plinth and mark the centre. Fix the small part of the PlinthLock in place using the centre line marked on the PlinthLock as a guide.
5. Slot into position.

Where to install

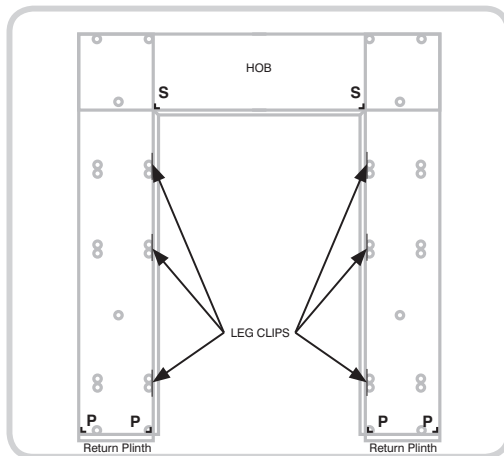
Standard "U" Shape Layout With Full Length End Panel



Full Length End Panel

P = PanelLock
S = Standard PlinthLock

Standard "U" Shape Layout With Return Plinth

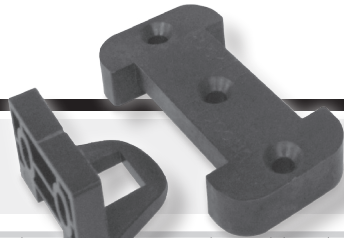


Return Plinth

P = PanelLock
S = Standard PlinthLock



Panel/Cabinet Connection System



New PanelLock is a quick and easy to use fixing system for a wide range of applications.

It can be either Removable or Permanently Fixed. Choose 'Lock' or 'Unlock' when fixing the female section

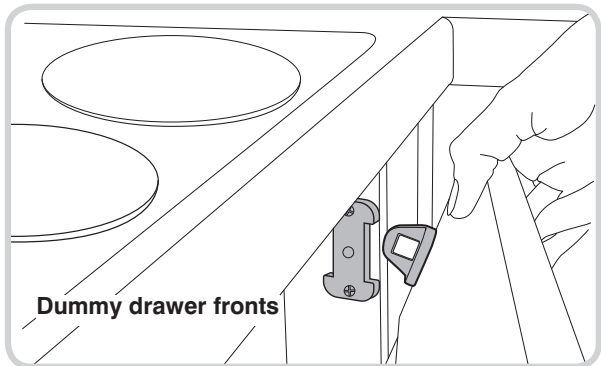
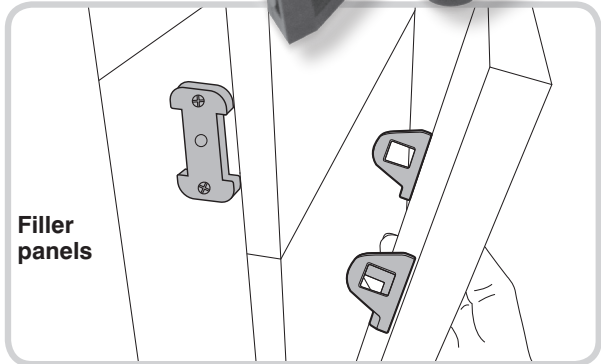
PanelLock allows for adjustment to be made after the panel has been fitted – so no need to fit and refit again and again.

Manufactured in glass filled nylon this fixing system is extremely tough and will withstand heavy loads.

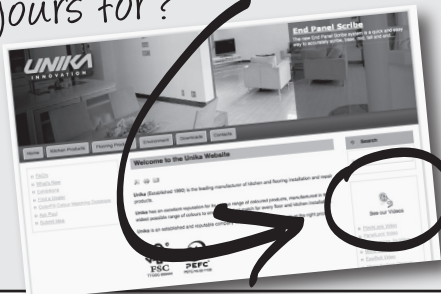
There are literally thousands of uses for the new PanelLock.

In Kitchens use on:

- ▶ **Corner Posts**
- ▶ **Access Panels**
- ▶ **Pipe Boxing**
- ▶ **Filler Panels**
- ▶ **Dummy drawer fronts**
- ▶ **Infill panels above fridges & below ovens**
- ▶ **Bridging panels above American fridge freezers**
- ▶ **Return plinths etc.**



What will you use yours for?



to view videos visit:

www.unika.co.uk

or simply scan the codes below using smart phone



plinth/lock



panel/lock



UNIKA COLOR PRODUCTS LTD

Unika House, New York Way, New York Industrial Park,
Newcastle upon Tyne, U.K. NE27 0QF

Telephone: +44 (0) 191 259 0033 Fax: +44 (0) 191 257 4525

Email: sales@unika.co.uk www.unika.co.uk