



## SERVO-DRIVE flex

For electrical opening of handle-less,  
integrated refrigerators

[www.blum.com](http://www.blum.com)

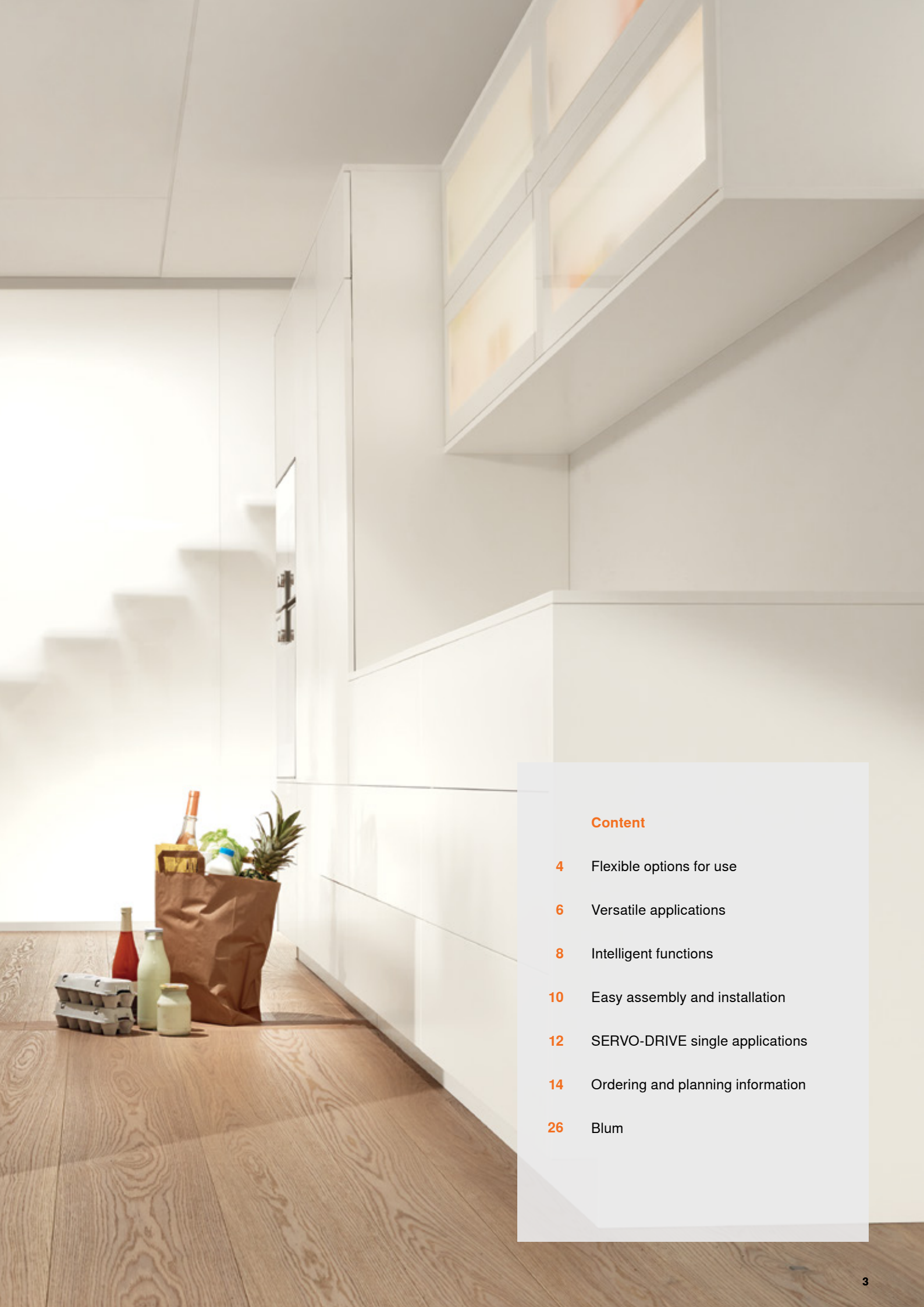
 **blum**<sup>®</sup>

# Entirely handle-less kitchen design

In kitchens with minimalist, handle-less designs, integrated refrigerators, freezers and dishwashers can too now disappear stylishly behind furniture fronts. The SERVO-DRIVE flex electrical opening support system ensures easy opening.

[www.blum.com/sdflex](http://www.blum.com/sdflex)





## Content

- 4 Flexible options for use
- 6 Versatile applications
- 8 Intelligent functions
- 10 Easy assembly and installation
- 12 SERVO-DRIVE single applications
- 14 Ordering and planning information
- 26 Blum



# Flexible options for use

Left or right opening, sliding or fixed door – regardless of the installation situation, SERVO-DRIVE flex can be used with standard integrated refrigerators, combination fridge/freezers, freezers and dishwashers.









## Versatile applications

Various installation situations can be implemented with the SERVO-DRIVE flex electrical opening support system. The drive unit is suitable for various applications.



Each door in the combination fridge/freezer is fitted with a separate SERVO-DRIVE flex unit and can therefore be opened individually.



Large and heavy doors, e.g. freezer doors, open with two synchronised drive units reliably and at the same time.



For refrigerators, an optional wireless switch can be used to expand the trigger range on the front. Whichever part of the front is pressed, opening the door is always convenient.



If SERVO-DRIVE flex is used with integrated dishwashers, the drive unit is mounted in the centre of the installation recess.



# Intelligent functions

SERVO-DRIVE flex is a well-conceived system which is designed specifically to suit the demands of everyday kitchen use. Thanks to the intelligent functions, handle-less integrated devices can be operated easily and conveniently.

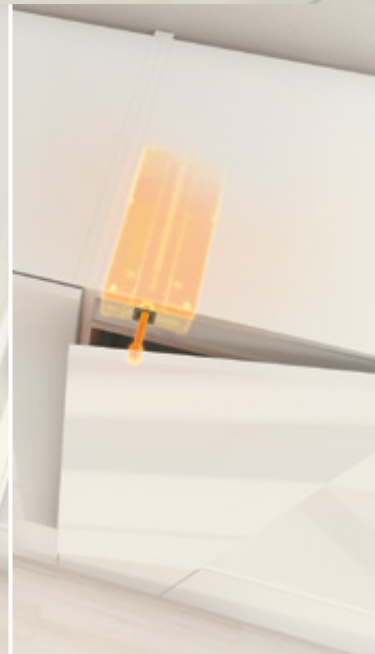


## Lean protection

SERVO-DRIVE flex differentiates between short pressing actions and longer leaning actions. The lean protection prevents accidental triggering of the opening support system.

### Adaptive system

SERVO-DRIVE flex can be adapted to suit the door properties. This means the access gap is always the same size and the door can be opened reliably.



### Automatic self-closing system

If the door is not fully opened after triggering the opening support system, the magnetic rod pulls the front shut again. This ensures that the door does not remain open accidentally.



### Trigger safety

After opening, the rod retracts into the drive unit. The user's working area remains free because the opening function is not triggered again until pressure is applied to the front.







## Easy assembly and installation

SERVO-DRIVE flex is mounted easily and conveniently in just a few steps. If the drive unit needs to be accessed subsequently, the front of the installation recess can simply be unclipped.





#### Attach mounting plate

Start by screwing in a mounting plate to both the left-hand and right-hand sides in the installation recess.



#### Clip on drive unit

The drive unit can be clipped onto the left or right mounting plate, depending on the door opening.



#### Connect power supply

The cabled SERVO-DRIVE flex unit is connected to the power supply.



#### Mount the front

The front panel can be clipped directly onto the mounting plates over previously mounted attachments.



#### Synchronise the drive unit

During the reference run, the drive unit adjusts itself to the installation situation. SERVO-DRIVE flex is now ready for use.



➤ View assembly film  
[www.blum.com/sdflex\\_videos](http://www.blum.com/sdflex_videos)

# Other single applications for SERVO-DRIVE

In addition to SERVO-DRIVE flex, other single applications exist for the tried-and-tested easy-to-use SERVO-DRIVE system. For example, waste bin pull-outs or individual lift systems in wall cabinets can be fitted with an electrical system.

[www.blum.com/singleapplications](http://www.blum.com/singleapplications)

 **blum**





#### **SERVO-DRIVE uno for waste bin pull-outs**

Use your hip, knee or foot – a short press on the front is all it takes and the pull-out opens automatically. SERVO-DRIVE uno for waste bin pull-outs is a convenient retrofitting solution and can be mounted in just a few simple steps.



#### **SERVO-DRIVE uno for AVENTOS**

If just one lift system is to be fitted with an electrical system, SERVO-DRIVE uno for AVENTOS is the ideal motion support system for the wall cabinet. Individual lift systems can be opened with a light touch and closed silently and effortlessly with BLUMOTION.



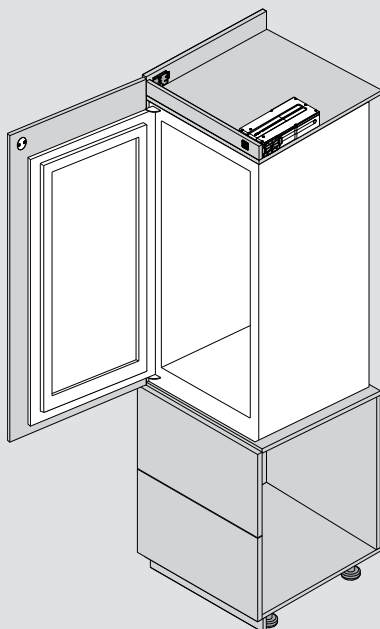


## SERVO-DRIVE flex



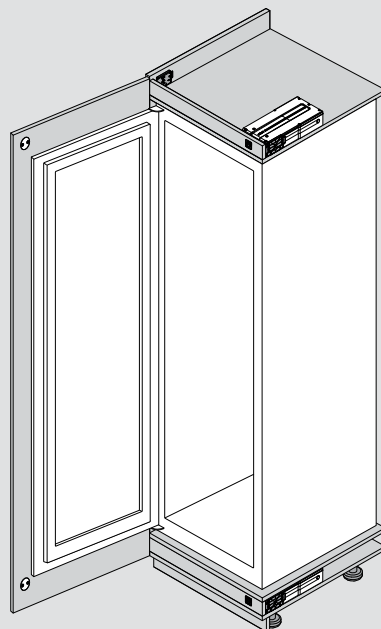
## Order specification

Refrigerator – NH ≤ 1780 mm  
Freezer – NH < 1780 mm



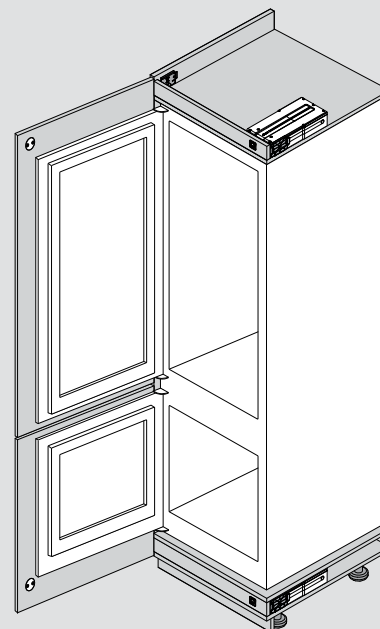
1 x SERVO-DRIVE flex set

Freezer – NH ≥ 1780 mm



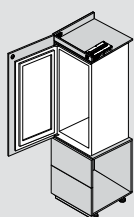
2 x SERVO-DRIVE flex set

Fridge/freezer combination



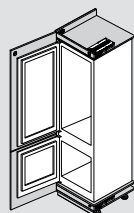
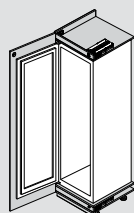
2 x SERVO-DRIVE flex set

### Ordering for one unit



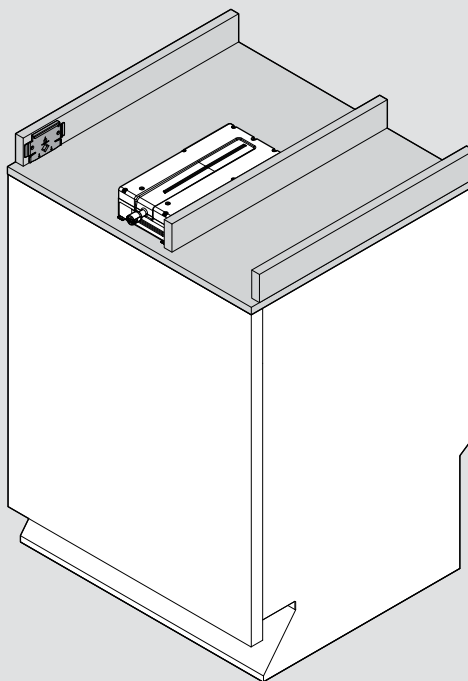
|   |    |              |
|---|----|--------------|
| SERVO-DRIVE flex set                          | 1x | Z10C500A     |
| Wall power supply 16 W (see table on page 16) | 1x | Z10NA20(xy)F |

### Ordering for two units

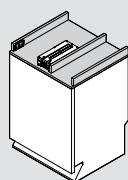


|  |    |             |
|--|----|-------------|
| SERVO-DRIVE flex set   | 2x | Z10C500A    |
| Blum transformer 72 W (application for more than one unit, see table on page 16)           | 1x | Z10NE020x   |
| Flex   |    | Z10M200x    |
| Transformer unit housing for cabinet underside fixing                                      | 1x | Z10NG000    |
| Alternative: transformer unit housing for panel fixing                                     | 1x | Z10NG120    |
| Synchronisation cable 300 cm, R7035 light grey (only for freezers with a height of 178 cm) |    | Z10K300A    |
| Connecting node (1x), Cable end protector (2x)   |    | Z10V100E.01 |
| Black distribution cable for cutting to size   |    | Z10K300A    |
| Cable holder   |    | Z10K0009    |
| Recommended for the fridge/freezer combination:  |    |             |
| SERVO-DRIVE switch   |    | 21P5020     |
| Wireless receiver  |    | Z10C5007    |

## Dishwasher



## Ordering for dishwashers



|  |     |                |
|--|-----|----------------|
| SERVO-DRIVE flex set drive unit                    | 1 x | Z10C500A       |
| Wall power supply 16 W (see table on page 16)      | 1 x | ⚡ Z10NA20(xy)F |
| Additional mounting plate for use with dishwashers | 1 x | Z10C5005       |

|     |                      |
|-----|----------------------|
| NH  | Recess height        |
| BS  | Front thickness      |
| SWD | Side panel thickness |

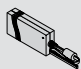
|        |                          |
|--------|--------------------------|
| APL-UK | Bottom edge of work tops |
| APÜ    | Protrusion of work tops  |

## SERVO-DRIVE flex




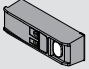
## Order specification

| Flex  |                          |           |               |
|---|--------------------------|-----------|---------------|
|  | Countries                |           |               |
|   | Flex Europe              | 10 pieces | Z10M200E      |
|   | Flex CH                  | 10 pieces | Z10M200C      |
|   | Flex US, CA              | 10 pieces | Z10M200U      |
|   | Flex JP                  | 10 pieces | Z10M200J      |
|   | Flex BR                  | 10 pieces | ☎ Z10M200S.01 |
|   | Flex UK                  | 10 pieces | Z10M200B      |
|   | Flex DK                  | 10 pieces | Z10M200D      |
|   | Flex IL                  | 10 pieces | Z10M200I      |
|   | Flex AU                  | 10 pieces | Z10M200K      |
|   | Flex CN                  | 10 pieces | Z10M200N      |
|   | Flex AR                  | 10 pieces | Z10M200A      |
|   | Flex IN                  | 10 pieces | ☎ Z10M200H    |
|   | Flex CL                  | 10 pieces | Z10M200L      |
|   | Flex TW                  | 10 pieces | Z10M200T      |
|   | Flex ZA                  | 10 pieces | Z10M200Z      |
|   | Flex Europe without plug | 10 pieces | Z10M200E.OS   |

| Blum transformer  |   |                        |           |
|---|---|------------------------|-----------|
|  | 72 W  |                        |           |
|   | Language packages – assembly and instruction leaflet      |                        |           |
|   | <b>A</b>  | DE, EN, FR, IT, NL     | Z10NE020A |
|   | <b>B</b>  | DA, EN, FI, NO, SV     | Z10NE020B |
|   | <b>C</b>  | EL, EN, HR, SL, SR, TR | Z10NE020C |
|   | <b>D</b>  | EN, ES, FR, IT, PT     | Z10NE020D |
|   | <b>E</b>  | CS, HU, SK, PL         | Z10NE020E |
|   | <b>F</b>  | BG, ET, LT, LV, RO, RU | Z10NE020F |
|   | <b>G</b>  | EN, ES, FR, (US, CA)   | Z10NE020G |
|   | <b>H</b>  | EN, ZH                 | Z10NE020H |
|   | Only 1 Blum transformer permitted per distribution cable! |                        |           |

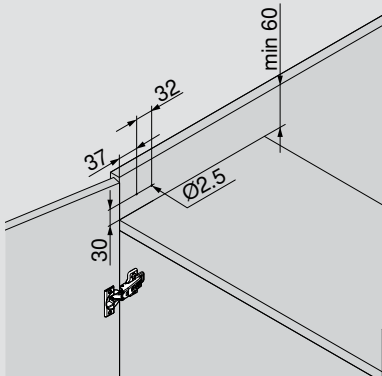
|                             |  |   |  |          |  |          |  |          |  |                        |  |                     |  |
|-----------------------------|--|---|--|----------|--|----------|--|----------|--|------------------------|--|---------------------|--|
|                             |  | <b>Blum wall power supply 16 W</b><br><b>including flex (1120 mm)</b><br><b>Network adapter (x) *</b> |  |          |  |          |  |          |  |                        |  |                     |  |
|                             |  |   |  |          |  |          |  |          |  |                        |  |                     |  |
| <b>E</b>                    |  | <b>B</b>  |  | <b>K</b> |  | <b>R</b> |  | <b>N</b> |  | <b>U</b>               |  | <b>A</b>            |  |
| <b>Language package (y)</b> |  |   |  |          |  |          |  |          |  |                        |  |                     |  |
| <b>A</b>                    |  | DE, EN, FR, IT, NL  |  |          |  |          |  | <b>E</b> |  | CS, HU, PL, SK         |  |                     |  |
| <b>B</b>                    |  | DA, EN, FI, NO, SV  |  |          |  |          |  | <b>F</b> |  | BG, ET, LT, LV, RO, RU |  |                     |  |
| <b>C</b>                    |  | EL, EN, HR, SL, SR, TR  |  |          |  |          |  | <b>G</b> |  | EN, ES, FR             |  |                     |  |
| <b>D</b>                    |  | EN, ES, FR, IT, PT  |  |          |  |          |  | <b>H</b> |  | EN, ZH                 |  |                     |  |
|                             |  |   |  |          |  |          |  |          |  |                        |  |                     |  |
|                             |  |   |  |          |  |          |  |          |  |                        |  | <b>Part no.</b>     |  |
| Variable                    |  |   |  |          |  |          |  |          |  |                        |  | <b>Z10NA20(xy)F</b> |  |

\*Not permitted for more than one drive unit!

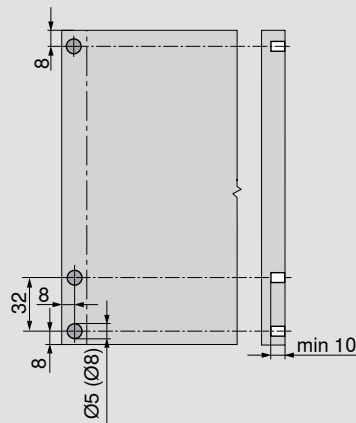
| Optional accessories for refrigerators and freezers to extend the trigger region   |                    |  |          |
|--|--------------------|--|----------|
| <br> | SERVO-DRIVE switch |  | 21P5020  |
|  | Wireless receiver  |  | Z10C5007 |
|  |                    |  |          |



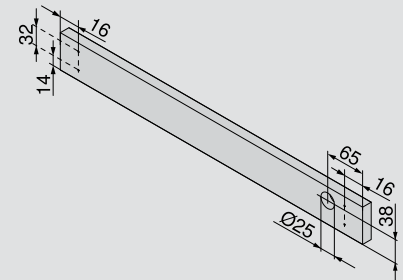
### Preparation/drilling



Drilling for mounting plate

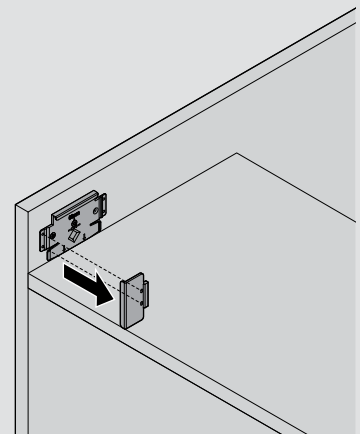
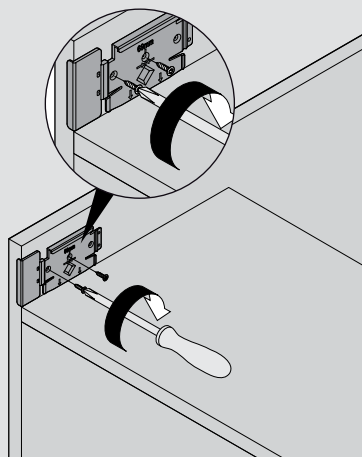
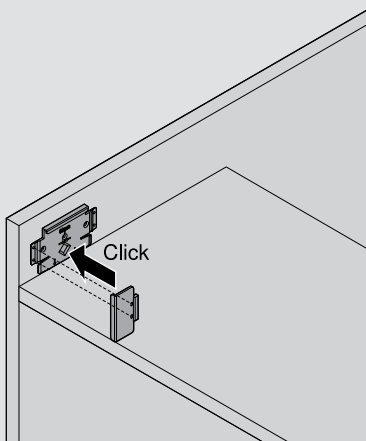


Drilling front for bumper

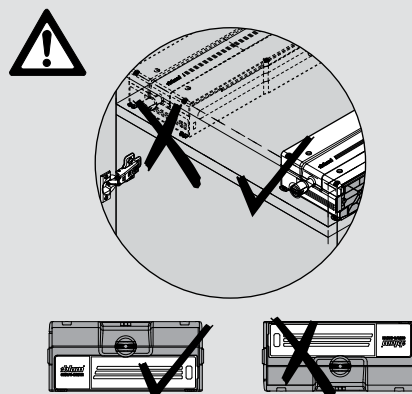
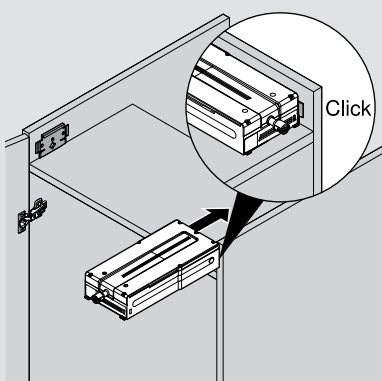


Drilling front

### Assembly using assembly jig

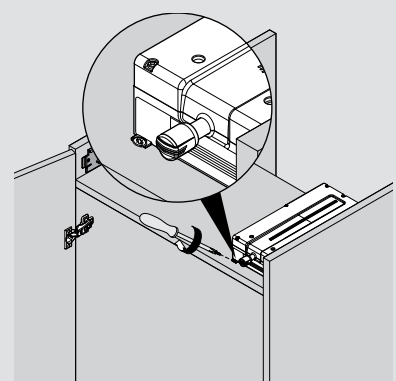


### Drive unit assembly

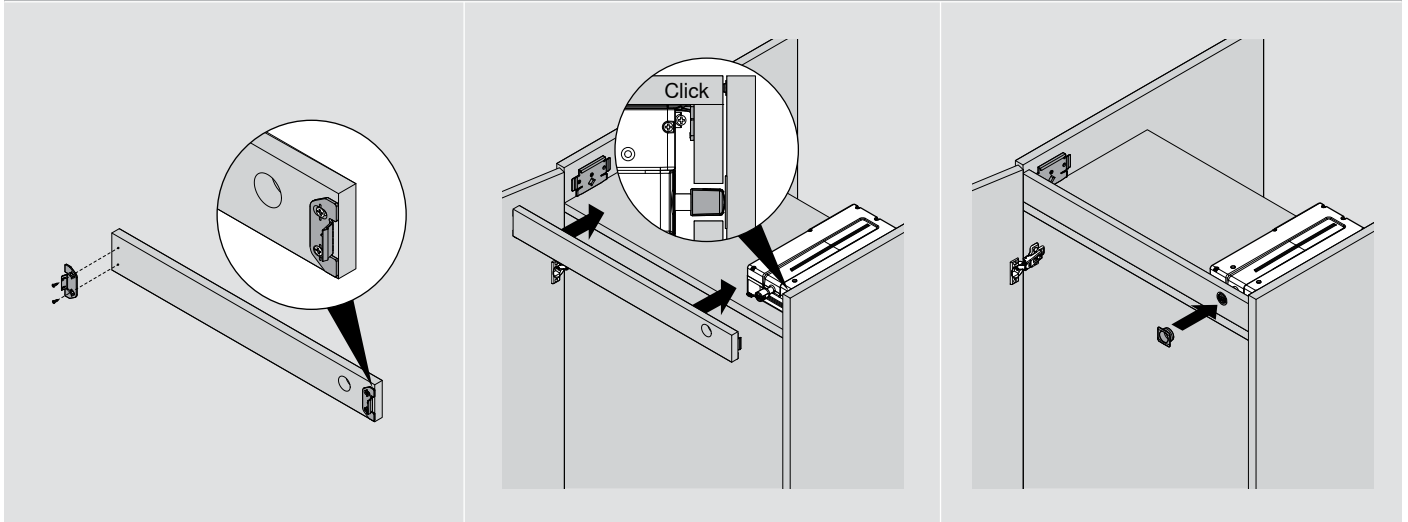


Important notes!

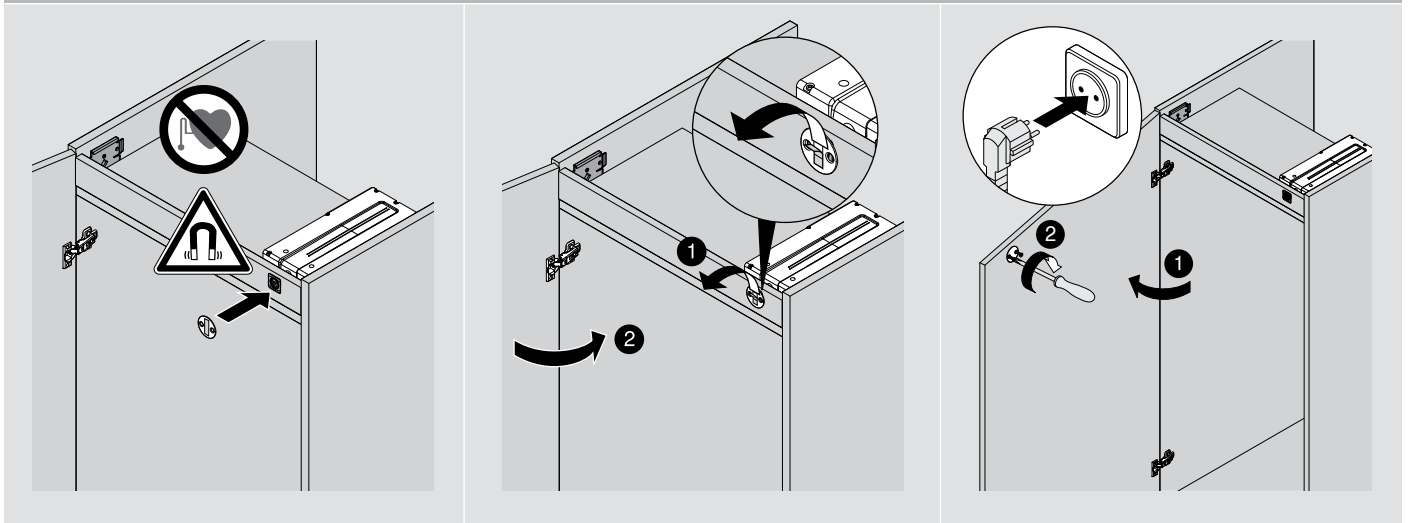
### Transportation lock



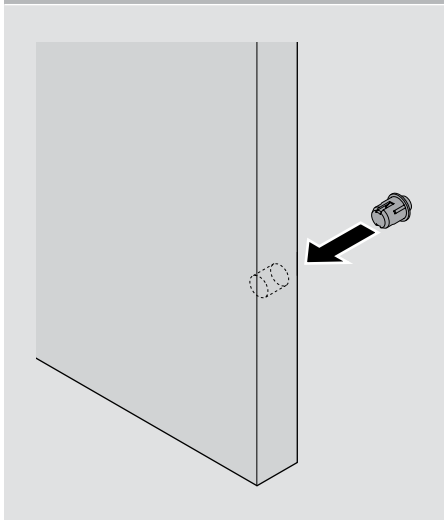
Front assembly



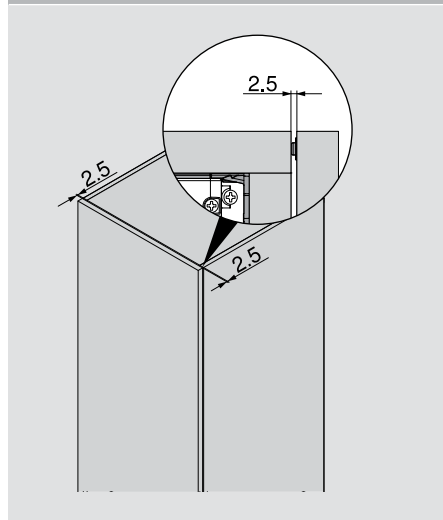
Catch plate assembly



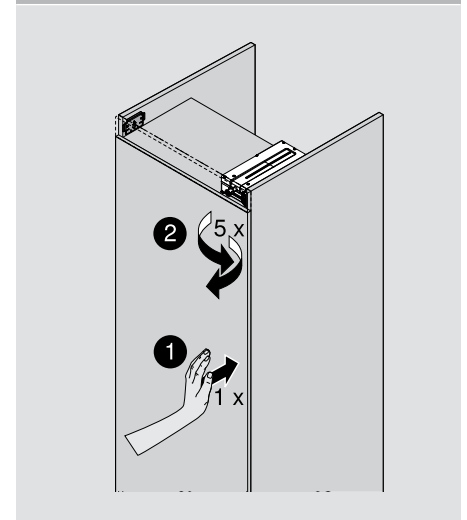
Assemble bumper



Adjust front gap



Reference run for start-up

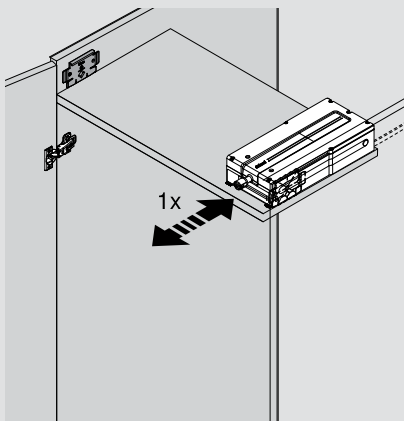
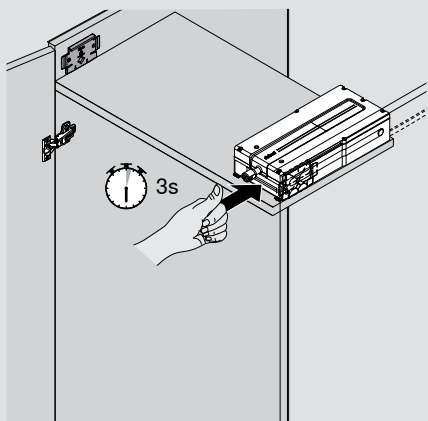


## Removal for refrigerators and freezers

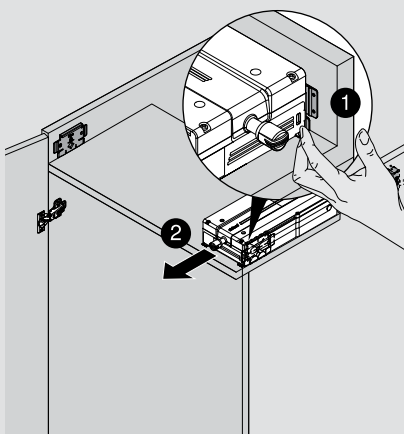
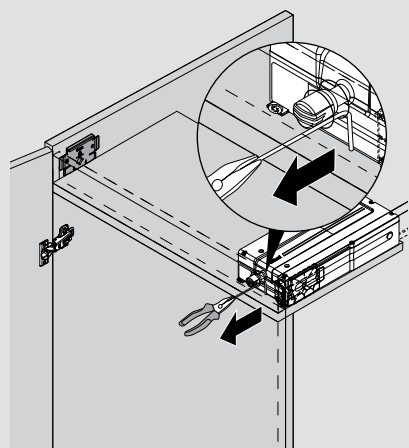
## SERVO-DRIVE flex



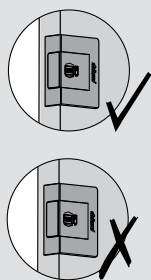
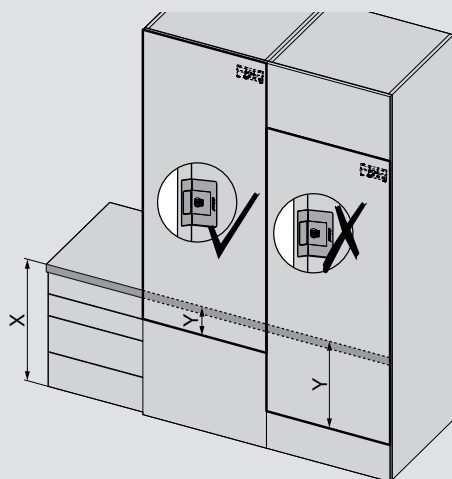
### Reset SERVO-DRIVE unit



### Removal



Recommendation for using wireless switch

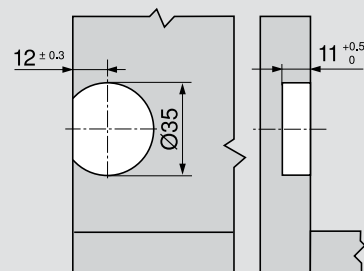


$y \leq 200 \text{ mm}$

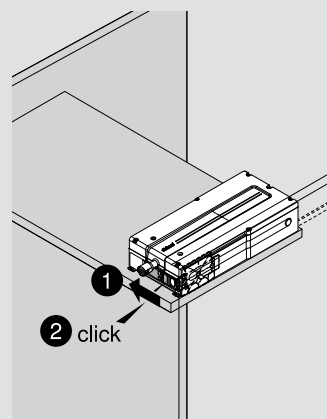
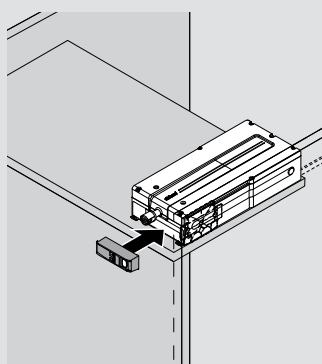
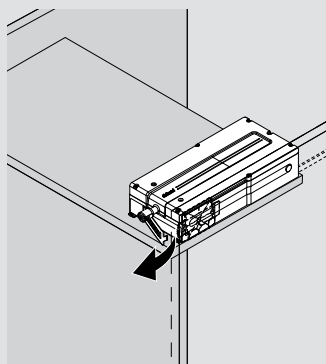
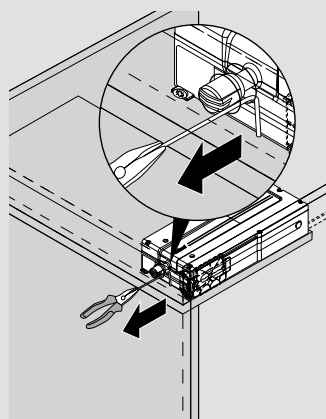
$y > 200 \text{ mm}$

x = Work top height

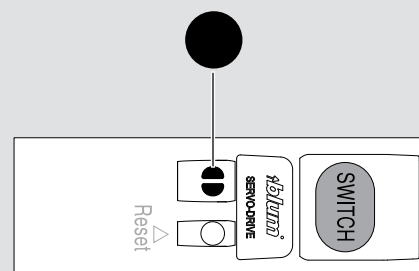
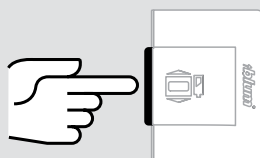
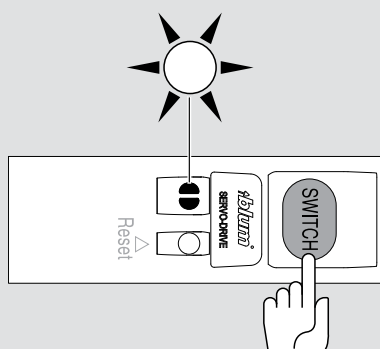
Wireless switch assembly



Wireless receiver assembly

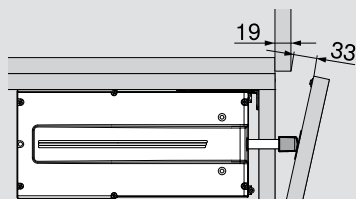
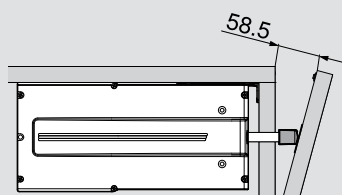


Wireless switch activation





## Access gap – measurements

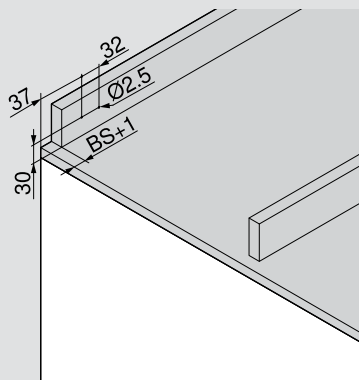


## General notes



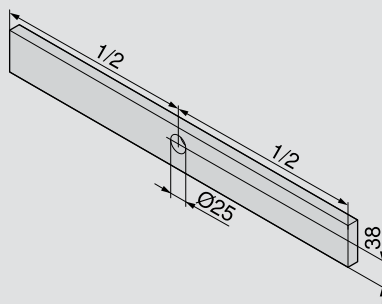
If the door of the device is left open for a relatively long time, for example when putting away shopping, a vacuum may be created inside the refrigerator or freezer after it has been closed. This may result in it not being possible to open the door of the device for a few seconds. This vacuum normally disappears after a short amount of time and the opening function becomes fully operational once again.

### Preparation/drilling

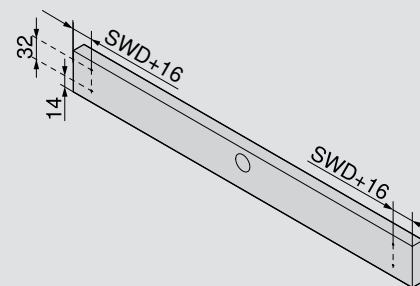


Drilling for mounting plate

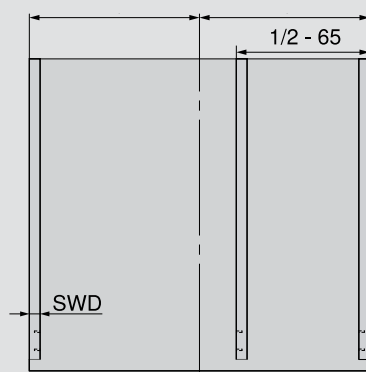
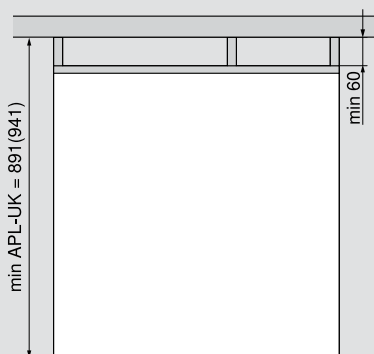
BS 16-19 mm



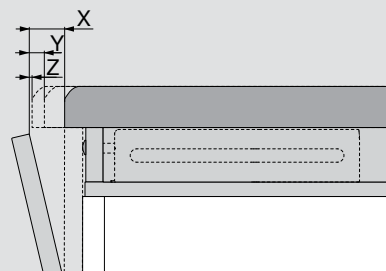
Drilling front



### Drive unit planning



### Access given protrusion of work tops

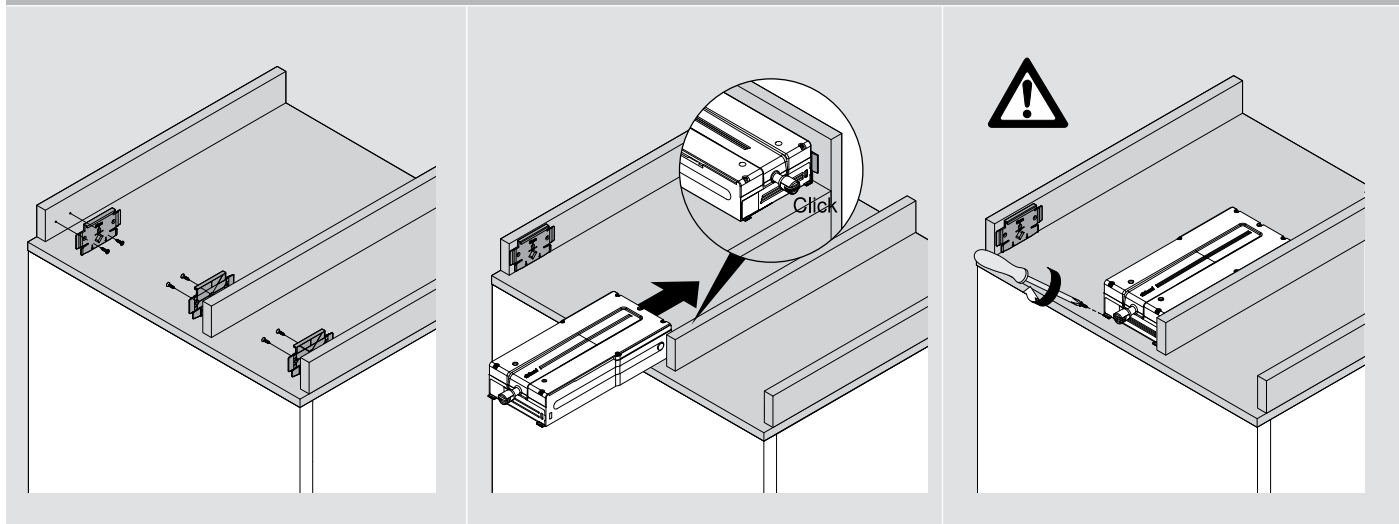


|   |       |     |       |
|---|-------|-----|-------|
| X | 30 mm | APÜ | 0 mm  |
| Y | 10 mm | APÜ | 20 mm |
| Z | 0 mm  | APÜ | 30 mm |

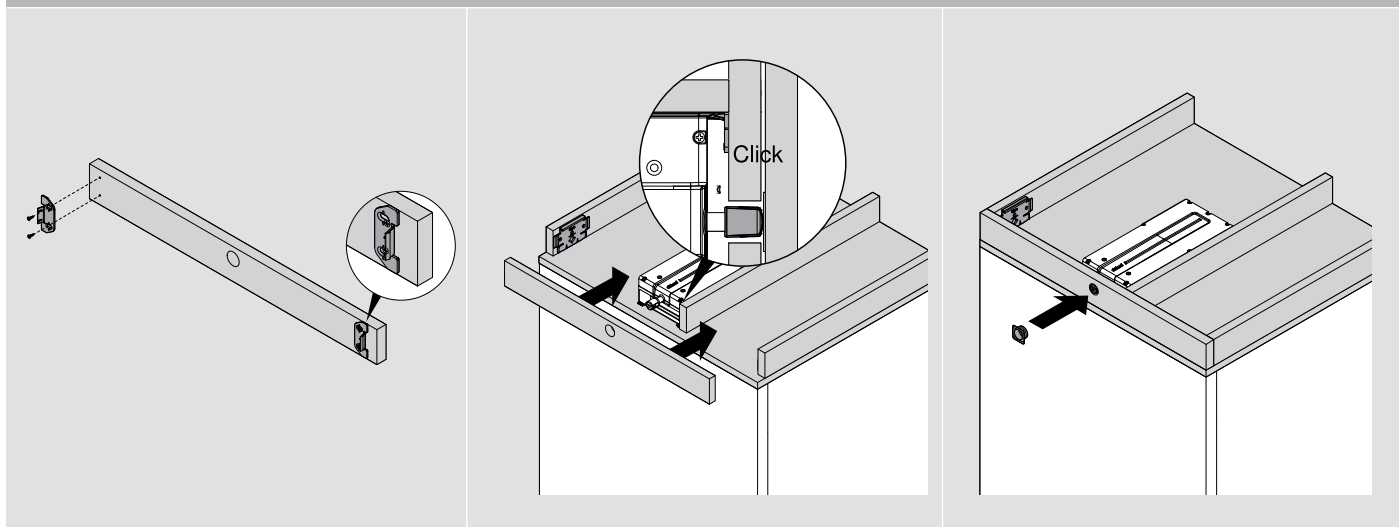
|     |                      |
|-----|----------------------|
| NH  | Recess height        |
| BS  | Front thickness      |
| SWD | Side panel thickness |

|        |                          |
|--------|--------------------------|
| APL-UK | Bottom edge of work tops |
| APÜ    | Protrusion of work tops  |

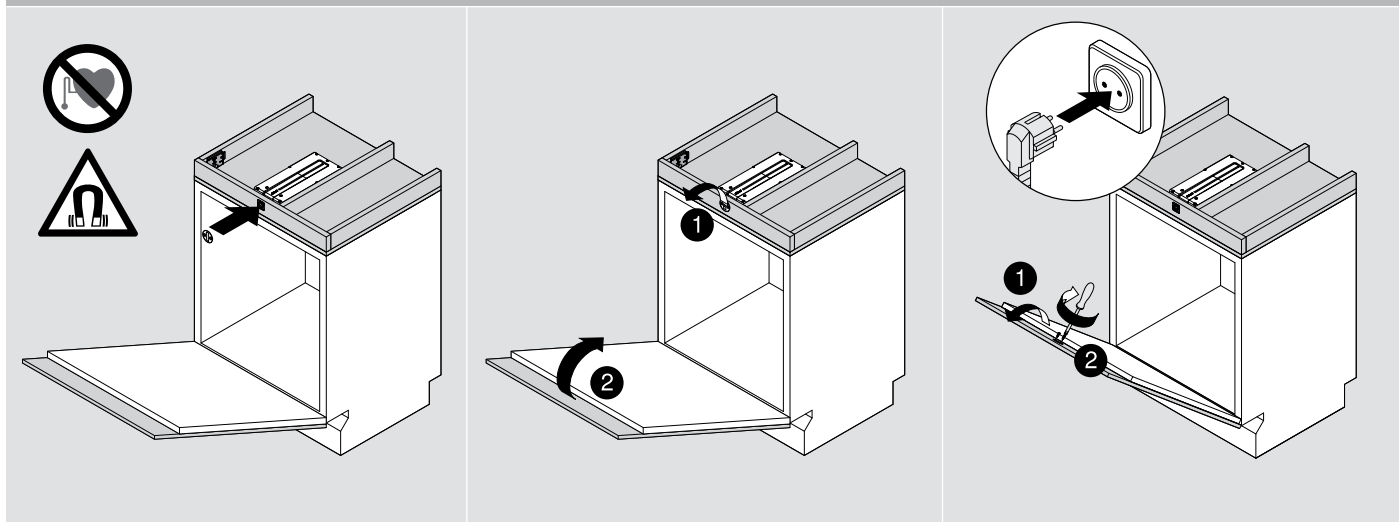
### Drive unit assembly



### Front assembly



### Catch plate assembly

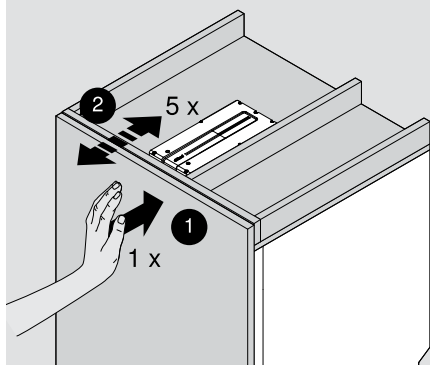


## SERVO-DRIVE flex

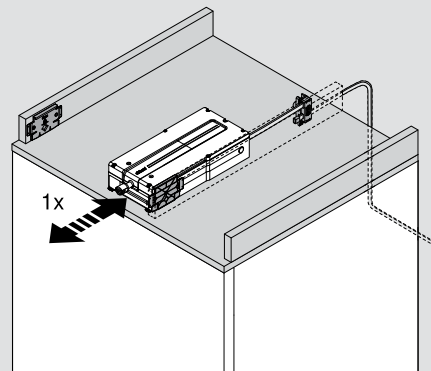
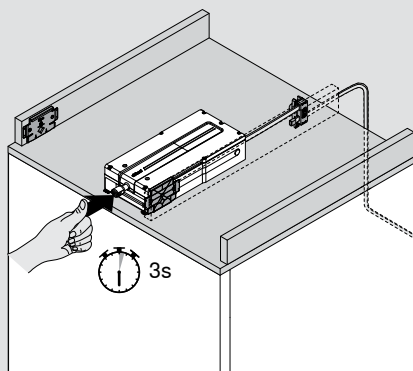


## Dishwasher removal / cabling

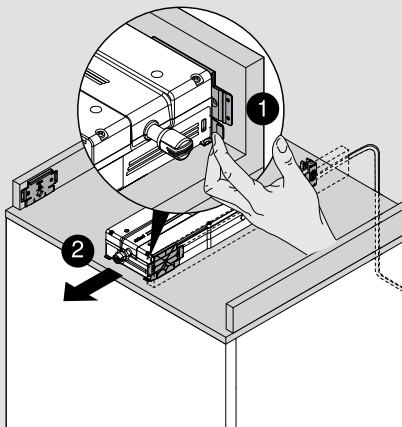
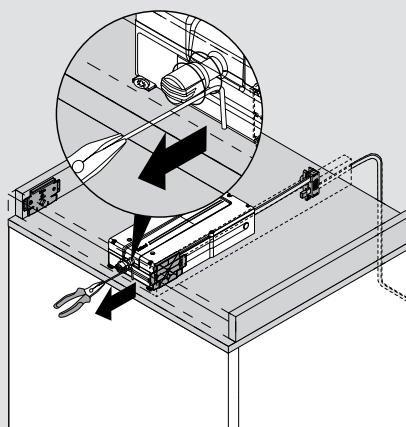
### Reference run



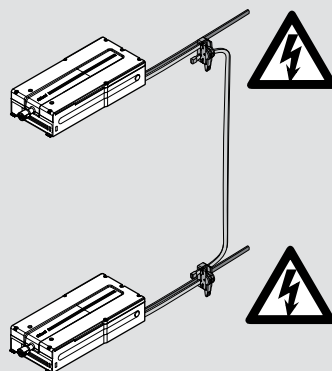
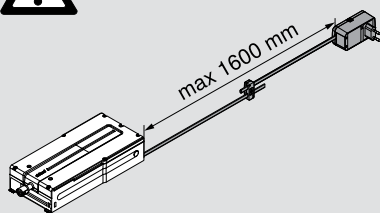
### Reset SERVO-DRIVE unit



### Removal



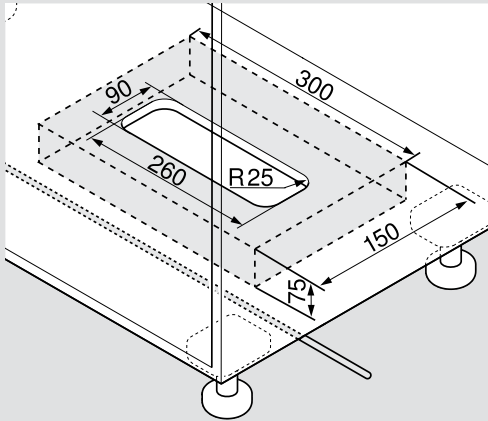
### Cabling/Information



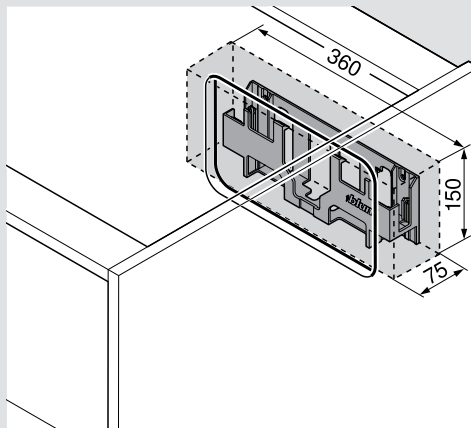
Black = power supply  
Light grey R7035 = communication  
(synchronisation cable)



## Space requirement + safety distance for transformer unit housing



Base mounting

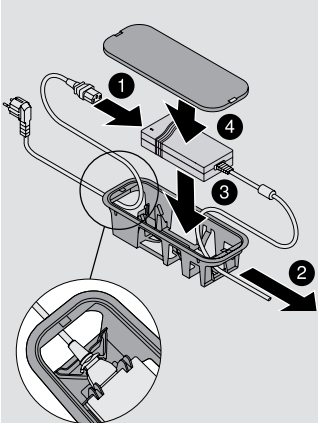


Panel mounting

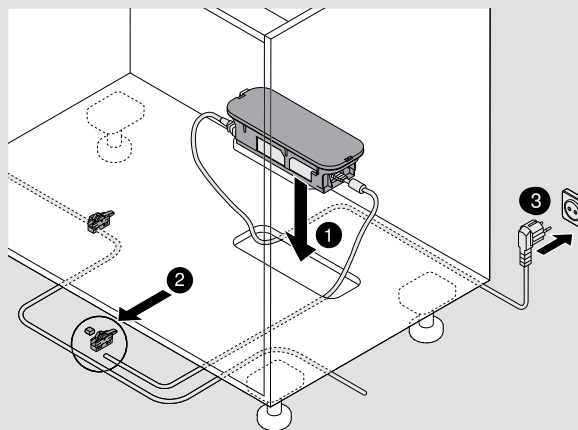
### Note:

Maintain a 30 mm safety distance from the bottom edge (base mounting) and/or front edge (panel mounting) and side edges of the transformer unit housing to the neighbouring elements to allow for air circulation; otherwise, there is a risk that the Blum transformer could overheat.

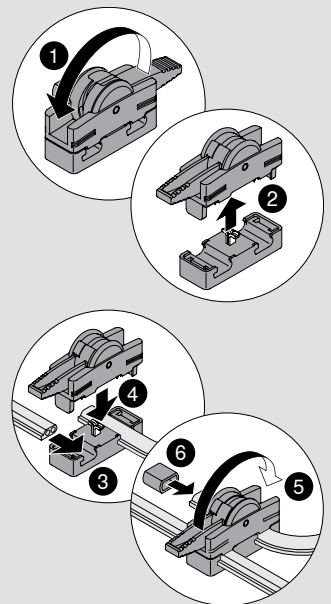
## Transformer unit housing for base mounting



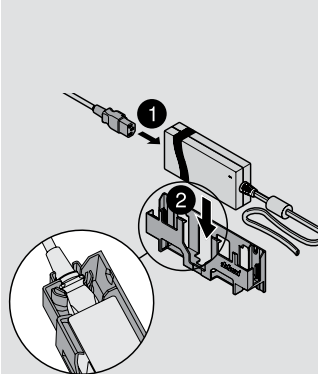
Pull-out stop



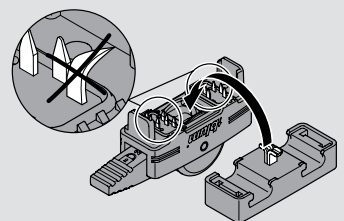
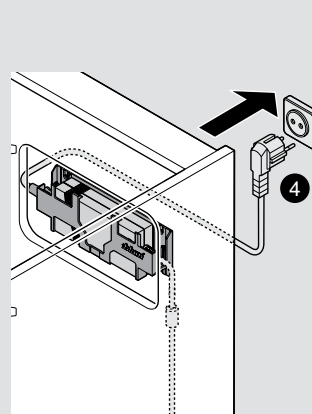
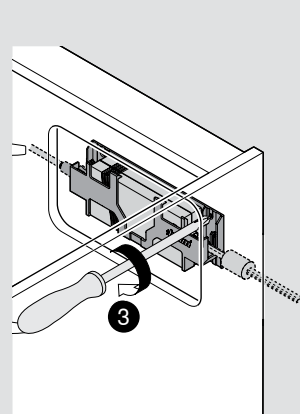
## Connecting node assembly



## Transformer unit housing for panel mounting



Pull-out stop



Do not damage piercing pins!

# Blum

Founded over 60 years ago by Julius Blum, today Blum is an internationally active family-owned company. Its strategic business segments include hinge, pull-out and lift systems. All our product developments focus on perfecting motion.







### Blum in Austria and around the world

The company has seven plants in Vorarlberg, Austria, additional production sites in Poland, the USA and Brazil and 27 subsidiaries/representative offices. Blum supplies more than 100 markets. The Blum Group employs 6,400 people in total, 4,800 of whom work in Vorarlberg.



### Global customer benefits

"Whether manufacturer, distributor, fitter or kitchen user – everybody should personally enjoy the benefits of Blum products" – that is Blum's philosophy on global customer benefits.



### Innovations

To support customers with innovative fittings solutions and secure long-term success for the company, we need to consistently invest in research and development, in plants and facilities and in employee training. With more than 1200 registered trademarks around the world, Blum is one of Austria's most innovative companies.



### Quality

At Blum, the comprehensive concept of quality does not only apply to products. Services and our cooperation with customers and partners should also meet the same quality requirements.



### Environment

At Blum, we believe that responsible ecological behaviour has long-term economic benefits. The longevity of products is just one important aspect of many. Further important measures include the use of environmentally friendly processes, intelligent use of materials and prudent energy management.



### DYNAMIC SPACE

Good workflows, sufficient storage space and ease of use are important features of a practical kitchen. With its ideas for practical kitchens, Blum aims to bring function, convenience and ergonomics to the interior of furniture.



Blum U.K.  
Mandeville Drive  
Kingston, Milton Keynes  
GB-Buckinghamshire MK10 0AW  
Tel.: 01908 285700  
Fax: 01908 285701  
E-mail: [info.uk@blum.com](mailto:info.uk@blum.com)

Julius Blum GmbH  
Furniture Fittings Mfg.  
6973 Höchst, Austria  
Tel.: +43 5578 705-0  
Fax: +43 5578 705-44  
E-mail: [info@blum.com](mailto:info@blum.com)  
[www.blum.com](http://www.blum.com)



**ISO 9001**  
Certified Quality  
System



**ISO 14001**  
Certified Environmental  
System



**ISO 50001**  
Certified Energy  
System

