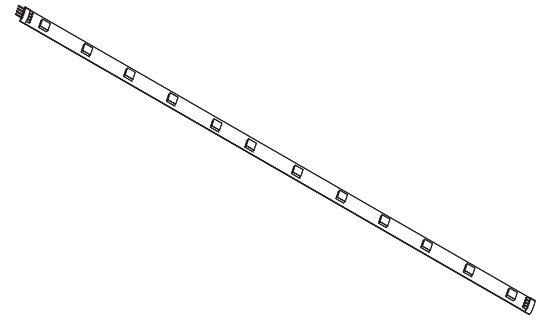


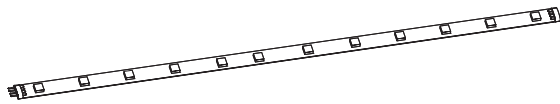
DUOFLEX - LED FLEXIBLE STRIP LIGHT



CODE: SE10011D0/SE10021D0

IMPORTANT: please read these instructions before commencing installation and retain for future reference.

Components



1 x DuoFlex LED
Flexible Strip Light



2 x End Caps



1 x Fitting Instructions

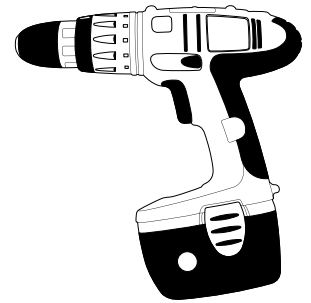
Tools required



Pencil



10mm Drill Bit



Power Drill

Important safety information

Please read these instructions carefully before attempting to install this product. It is advisable to keep these instructions in a safe place for further reference.

We recommend that you consult a qualified electrician. All electrical installations must be carried out in accordance with current IEE wiring regulations (BS7671).

These products must not be modified, if any modifications are made, it may invalidate the warranty and may render the product unsafe. These LED lights operate low voltage (24V).

Do not wire the individual LED light fittings directly to the mains. This product is for indoor use only. Keep out of moisture and use only in dry rooms.

- If in doubt installation must be carried out by a qualified electrician.
- Install on smooth flat surface(s) only.
- Make sure that the LED driver used with these fittings has an adequate max wattage.
- We recommend using the SE40555 15W 24V LED Driver with this fitting, you will be able to run a maximum of 4000mm of the DuoFlex from this driver. Alternatively, use the SE40556 30W 24V driver to run a maximum of 6000mm.

Safety instructions

1. Before commencing installation or maintenance, isolate the main electrical supply for the appropriate circuit at the fuse board.
2. This product requires a 24V LED driver which is only suitable for connecting to a 240V 50Hz supply.
3. The light should be mounted onto a secure surface.
4. Position lights where they will not be exposed to steam or splashes etc.
5. Suitable for furniture lighting.
6. When the lamp expires the fitting must be replaced.
7. Class III safety extra low voltage (SELV).

Waste Electrical & Electronic Equipment (WEEE)

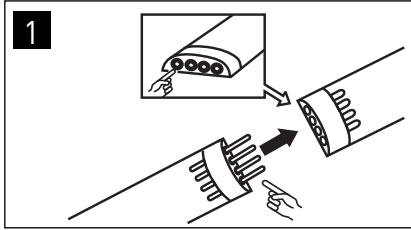
The Symbol on the product, or on the document accompanying the product, the crossed out wheelite bin symbol, indicated that this product may not be treated as household waste. Instead it shall be handed over to the applicable collection point for the recycling of electrical and electronic waste.



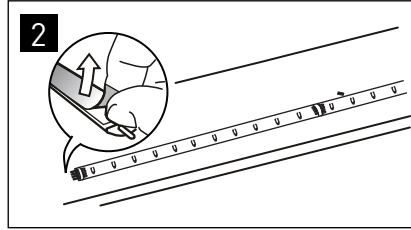
RoHS ✓
Compliant



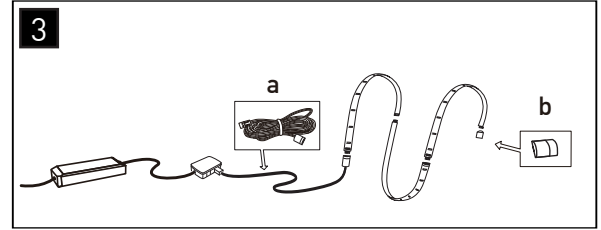
Installation



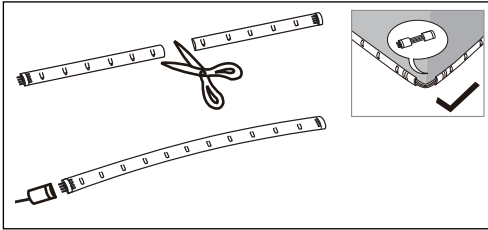
1 Fittings can be directly interlinked via the male & female connectors on each fitting. Interlink fittings as required before beginning installation.



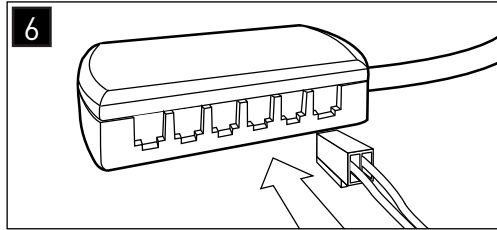
2 Peel the backing off all linked strips to reveal the 3M adhesive coating on the back of the strip. Carefully secure the strip to the surface in the required position.



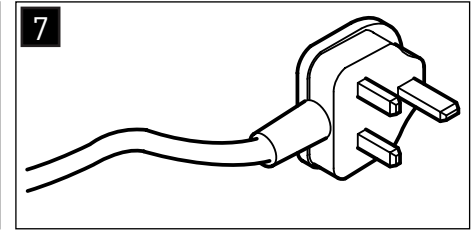
3 The last strip in the run should be connected to the driver connection lead SE10325 (a). The driver lead connects into one of the ports on the distribution block of the driver. Finally replace the end cap (b) to protect the end of the fitting.



The DuoFlex flexible strip can be cut ONCE. When the DuoFlex has been cut the female end of the cut strip must be discarded, this cannot be re-used. Use the SE90316HD 50mm corner connector cable (see top right above) to keep the run continuous if you have a 90 degree angle to get around.



6 Plug the white connector on the end of the driver connection cable(s) into the 24V LED driver distributor block. Beware not to exceed the wattage of the LED driver, the max wattage will be displayed on the 24V LED driver and on the light unit fitting it will display the wattage requirement.



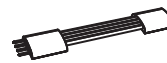
7 Finally wire the LED driver to 240V mains supply or 13A plug top.

Accessories listing



SE10325
2.5m Driver Connection Lead

*This item is required to run the DuoFlex flexible strip.



SE10327
50mm Corner Connection Cable

Get around a 90 degree bend without breaking the run of strips running from one driver connection lead.

SE10328
500mm Inter Connecting Cable

Connect up to 5 of these cables together and use to get around appliances without breaking the run of strips.

The driver connection lead (SE10325) is an essential accessory to power EACH RUN of the DuoFlex flexible LED strip light.

Maintenance & Care

- Ensure that the power is disconnected prior to cleaning.
- To keep the finish of this product, wipe over with soft cloth periodically.
- Do not use harsh chemical solvents, it may dis-colour or damage the finish.