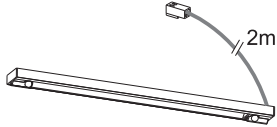


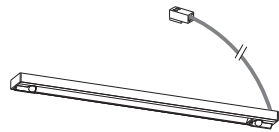
INSTALLATION
INSTRUCTIONS



CODE:SE20111C0

IMPORTANT: please read these instructions before commencing installation and retain for future reference.

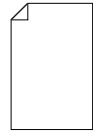
Components



1× Operio fitting



2× Screws



1× Fitting Instructions



Pz1 Screw Bit



10mm Screw Bit



Power Drill

Tools required

Important safety information

Please read these instructions carefully before attempting to install this product. It is advisable to keep these instructions in a safe place for further reference.

We recommend that you consult a qualified electrician. All electrical installations must be carried out in accordance with current IEE wiring regulations (BS7671).

These products must not be modified, if any modifications are made, it may invalidate the warranty and may render the product unsafe. These LED lights operate low voltage (12V).

Do not wire the individual LED light fittings directly to the mains. This product is for indoor use only. Keep out of moisture and use only in dry rooms.

- If in doubt installation must be carried out by a qualified electrician.
- Install on smooth flat surface(s) only.
- The Wattage of this product is 2.2W. Make sure that the LED driver used with these fittings has an adequate max wattage.
- We recommend using the SE40625 6W LED Driver with this fitting. You will be able to run a maximum of 2 fittings per driver. Alternatively, use the SE40525 15W LED Driver. A maximum of 6 fittings can be run from this driver.

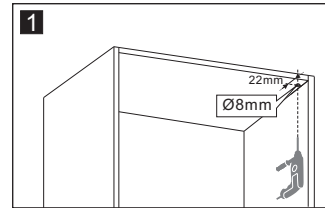
Safety instructions

1. Before commencing installation or maintenance, isolate the main electrical supply for the appropriate circuit at the fuse board.
2. This product requires a 12V LED driver.
3. The light should be mounted onto a secure surface.
4. Position lights where they will not be exposed to steam or splashes etc.
5. Suitable for furniture lighting.
6. When the lamp expires the fitting must be replaced.
7. Class III safety extra low voltage (SELV).

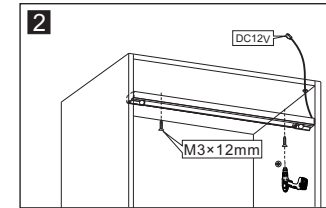
Waste Electrical & Electronic Equipment (WEEE)
The Symbol on the product, or on the document accompanying the product, the crossed out wheeler bin symbol, indicated that this product may not be treated as household waste. Instead it shall be handed over to the applicable collection point for the recycling of electrical and electronic waste.



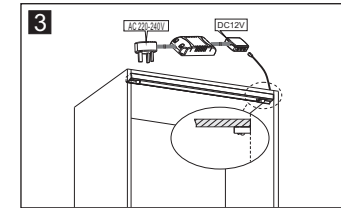
Installation



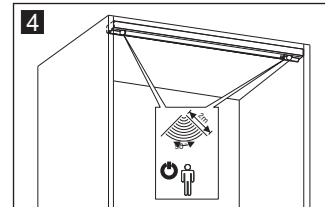
Drill the Ø8mm hole.



Feed driver connection wire through the hole & fix light with screws provided.

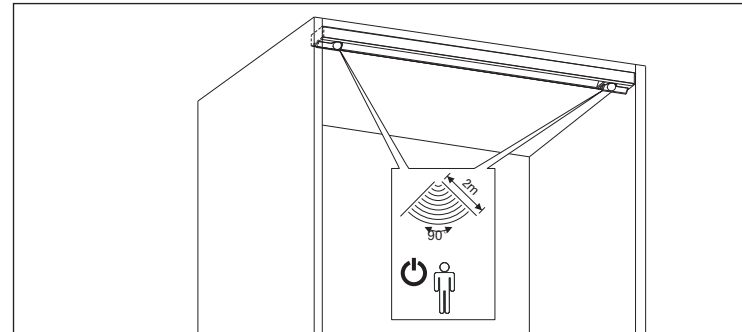


Connect the light wire to the driver as installed.



Sensor detection range & detection angle when installed.

Operation



The Operio Wardrobe Light has two built-in PIR sensors. When the wardrobe door is opened (from either side) this switch will detect motion from a distance of 2m and the light will switch on.

Maintenance & Care

- Ensure that the power is disconnected prior to cleaning.
- To keep the finish of this product, wipe over with soft cloth periodically.
- Do not use harsh chemical solvents, it may dis-colour or damage the finish.

Unit 7 Speedwell Road, Whitwood, Castleford, West Yorkshire, WF10 5PY
www.sensio.co.uk

Technical drawings for illustration purposes only. Sensio has the right to change any information without prior notice. Make sure you check all hole cut outs before work commences.