



Gemstone

Collection

Stunning recycled worksurfaces

Gemstone

Collection

As hard as quartz, as beautiful as granite,
as simple to install as solid surface . . .

Presenting our distinctive 'eco' worksurface range, Gemstone is a true gem; designed for style, environmentally friendly and manufactured to last, it has it all.

A remarkable composite of 85% recycled material including combinations of glass, mirror and shell, the 6 striking decors complement a wide range of kitchen designs.

The 'eco' worksurface solution that doesn't compromise on aesthetics...

With an 85% recycled content, the glass and mirror particles shine through, creating incredibly eye catching designs similar to re-engineered stone, while the shell particles provide a unique depth of detail.

All raw materials are locally sourced and collected from restaurants and pubs, with shattered glass from the glazing industry and waste sea shells from fish processors. Even the coloured epoxy resin used in the surfacing material as the binding agent is non-toxic and non-emitting.

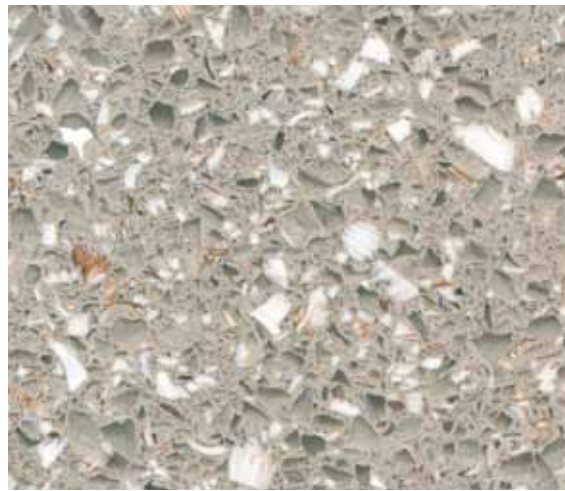


Why choose a Gemstone worksurface?

- Made from 85% recycled material, Gemstone offers environmental sustainability without compromising its good looks.
- Its hard surface provides increased durability comparable to re-engineered stone, ensuring longevity in performance and ideally suited for daily wear and tear.
- The distinctive surface formulation creates beautiful and unique designs for a bold statement comparable to Quartz, without the price tag.
- Solid joints deliver resistance to water, mould and bacteria, providing an hygienic surface with minimised risk of bacteria growth.
- Ease of installation means Gemstone can be installed on-site with the kitchen, without the need for templating, dramatically reducing fitting complexities, time and cost.
- Cleaned using only normal household detergents, Gemstone is simple to care for and maintain.



279 Coral



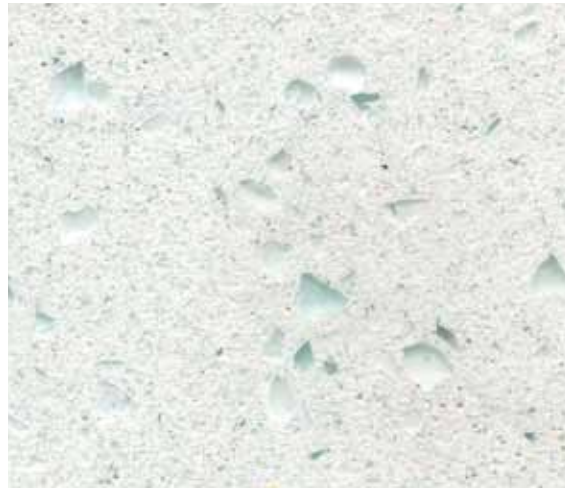
147 Permian



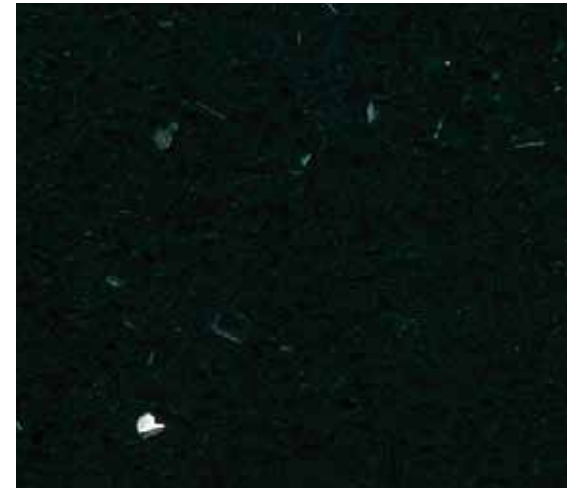
281 Platinum



091 Triassic



277 Snow



366 Supernova

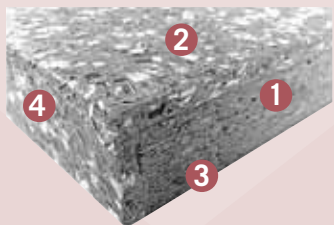


Gemstone
Collection



Images for illustrative purposes only. Refer to samples for exact colour and design.

What is a Gemstone worksurface made of?



- 1 28mm substrate
- 2 6mm surface material
- 3 Moisture resistant barrier
- 4 6mm edge material



Snow worksurface and upstand



Quality through and through

All Gemstone surfaces conform to EN standards, through ISO 9001:2008 business management systems. Our site is a safe, healthy place to work too, conforming to BS EN ISO 19001:2007 through the Occupational Health and Safety system (OHSAS). We are also supported by the BM TRADA Certification Body - an organisation that provides independent certification, testing, inspection, training and technical services around the world.



As holders of the furniture and kitchen industry's top quality GOLD certification from FIRA*, you can be confident your Gemstone surface is of a consistently high standard.

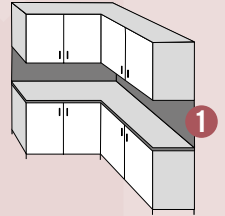


Made in Britain. All raw materials are locally sourced and processed in the UK.

*On selected decors

Accessories

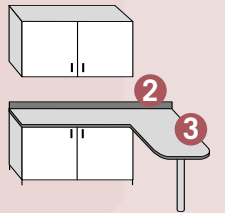
Highly practical and easy to fit, our Gemstone range also includes co-ordinating splashbacks and upstands that allow you to continue your chosen design from worksurface to wall. The end result speaks for itself - and offers a great alternative to tiling.



Creating the Gemstone bespoke look

Gemstone can transform a kitchen design, and offer a truly bespoke look, from curved island pieces or moulded under mount sink modules. The best bit is, it can all be done on site without the cost and time of templating.

Refer to the Gemstone installation leaflet for full details and to see why Gemstone is the perfect solution for a bespoke design, without the bespoke price tag.



- 1 Splashback
- 2 Upstand
- 3 Curved edge

Looking after your Gemstone worksurface

Take good care of your Gemstone worksurface and it will stay like new for years to come.

General Cleaning and Care

Gemstone worksurfaces are easily maintained and simply require a regular wipe down with a mild detergent and water. With very little maintenance the surface can be returned to its original condition and look new, longer than any other kitchen surface.



Scuffs and Scratches


Never cut anything directly on the worksurface. However, if scratching does occur, one of the main benefits of your Gemstone worksurface is that it is repairable.*



Extreme Heat

Never place any hot items from a heat source directly on to the worksurface. Should any accidental damage of the surface occur it can be repaired.*

*Refer to the care & maintenance guide for full instructions of how to repair any damage to your Gemstone worksurface. Depending on the severity of damage it may be necessary to request professional assistance from your installer.



Your Gemstone Supplier

Lambton Street Industrial Estate, Shildon, County Durham, DL4 1PX. United Kingdom
Tel: +44 (0)1388 774661 Web: www.wilsonart.co.uk