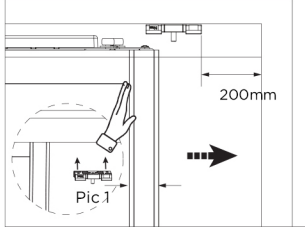


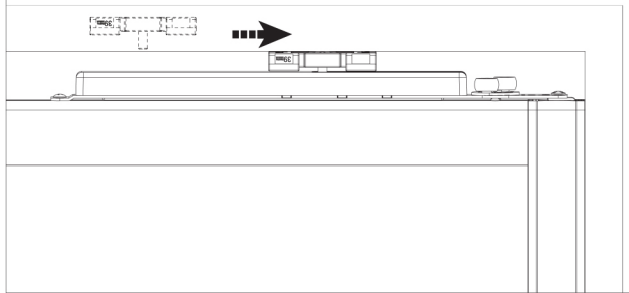
# Glide Frameless Fitting Instructions.



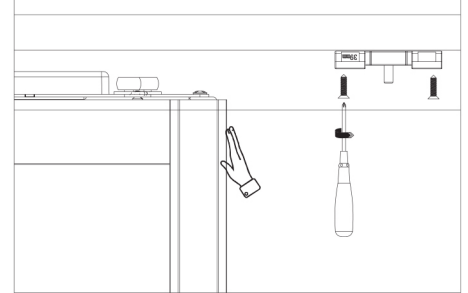
1. Place the actuator in the top track, at least 200mm from the side, then push the door fully to the side.



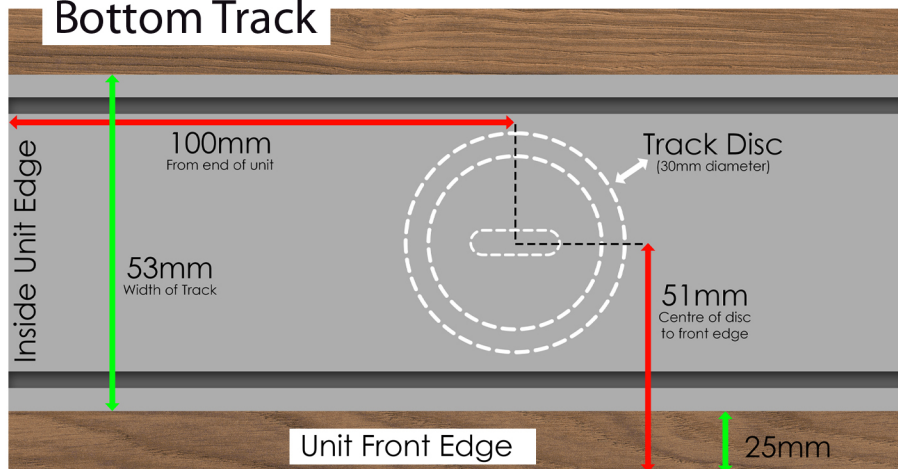
2. The actuator has been automatically located.



3. Fix the actuator



## Bottom Track



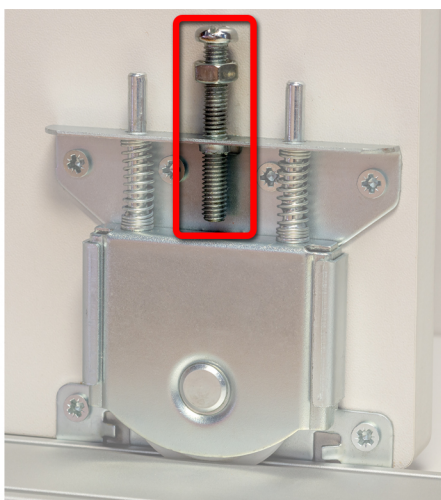
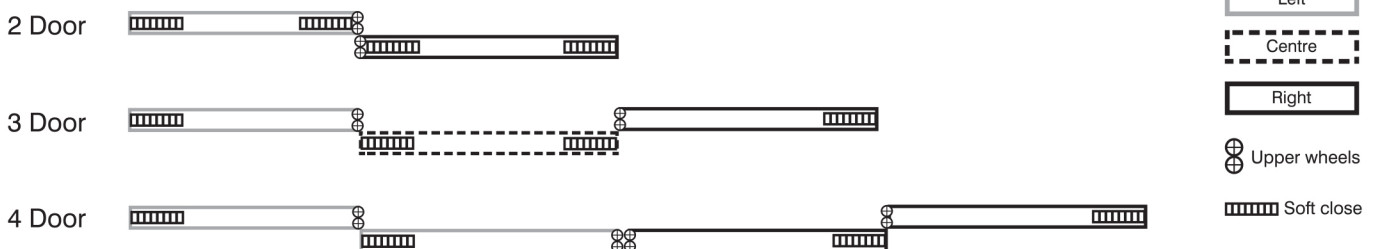
One disc should be placed 100mm from each side of the unit with the remaining discs spaced equally over the unit's width (Fig. 1)

If top track is flush with front edge of unit, centre of discs should be placed 51mm from the front edge



Once the discs have been fitted to the unit base (Fig. 1), the track can be fitted in place over the discs (Fig. 2)

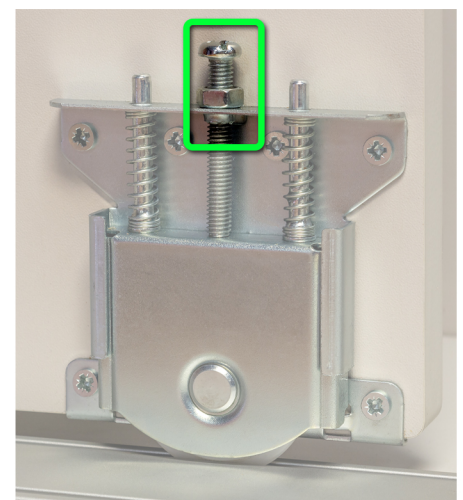
## Soft Close Door Configuration



Taking the weight of the door in the track, use the middle bolt to adjust the door height.



Adjust the bolt up or down giving suitable clearance for smooth operation (min 5mm).



Once a suitable clearance is achieved, use the nut to lock the bolt in position

# Glide Frameless Fitting Instructions.



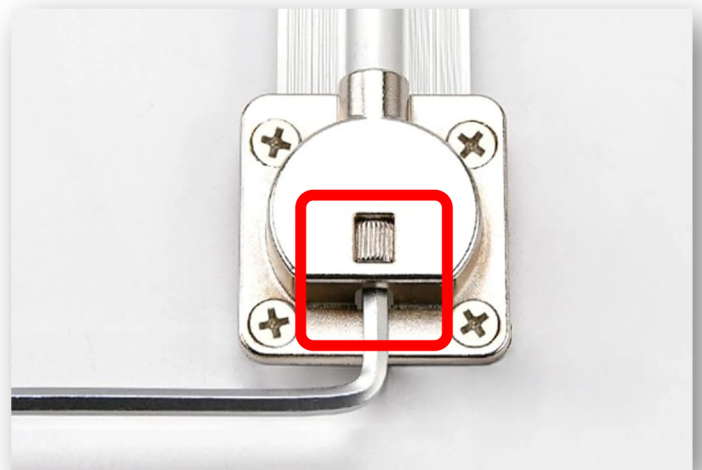
Your **Glide Frameless** doors will come with surface-mounted door straighteners fitted as standard to prevent warping and ensure a perfect fit and operation.

They have been installed and pre-tensioned but may require micro-adjustment on installation to ensure proper fitting and smooth application of the sliding doors.

**Lay the door face down on a clean, protective flat surface to access the hex bolts at either end of the rod.**

Using a 4mm allen key, the bolts may be loosened or tightened - depending on the door - so it may be adjusted to be perfectly straight within the aperture.

**We recommend making half turns with the hex bolts: small adjustments and careful observation will avoid damage to the door and the straightening mechanism.**



**Hex bolt adjustment to slacken the straightener rod or add tension, depending on the curve of the panel.**