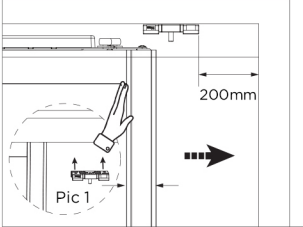


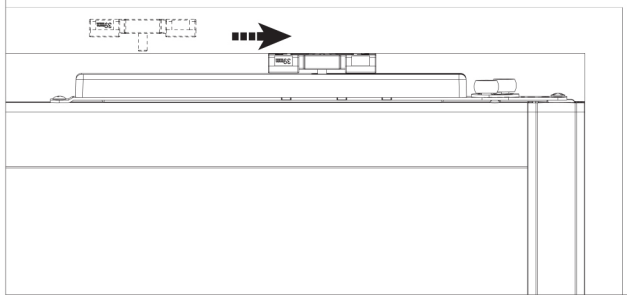
# Glide Frameless Fitting Instructions.



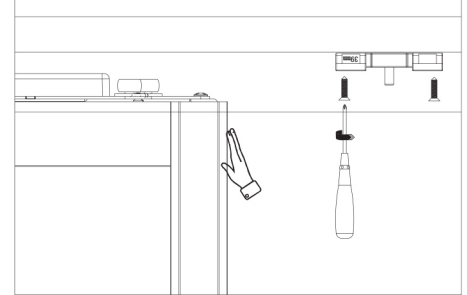
1. Place the actuator in any position on the top track and then push the door to the doorpost.



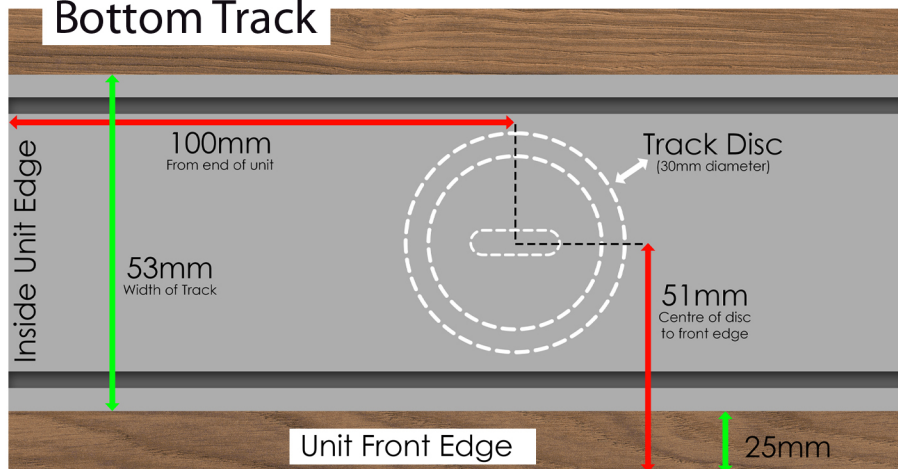
2. The actuator has been automatically located.



3. Fix the actuator



## Bottom Track



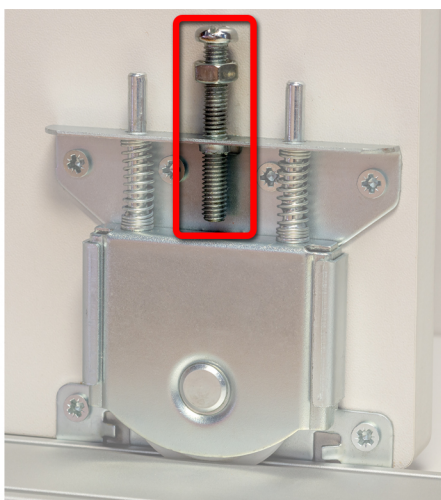
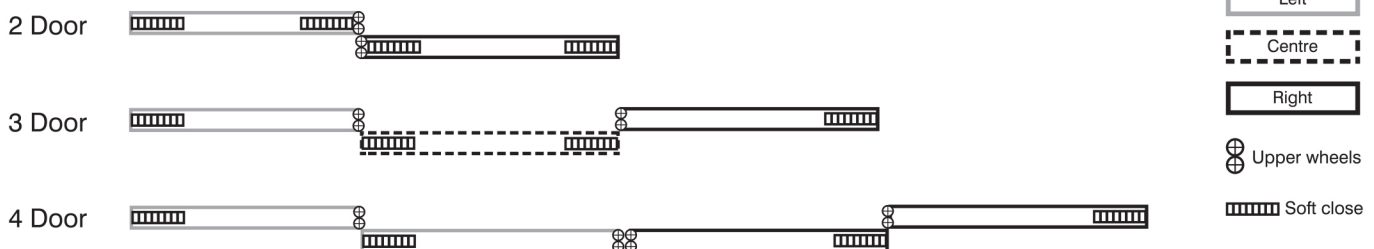
One disc should be placed 100mm from each side of the unit with the remaining discs spaced equally over the unit's width (Fig. 1)

If top track is flush with front edge of unit, centre of discs should be placed 41mm from the front edge



Once the discs have been fitted to the unit base (Fig. 1), the track can be fitted in place over the discs (Fig. 2)

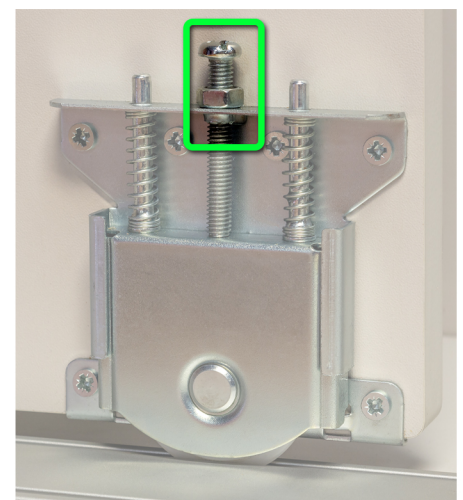
## Soft Close Door Configuration



Taking the weight of the door in the track, use the middle bolt to adjust the door height.



Adjust the bolt up or down giving suitable clearance for smooth operation (min 5mm).



Once a suitable clearance is achieved, use the nut to lock the bolt in position