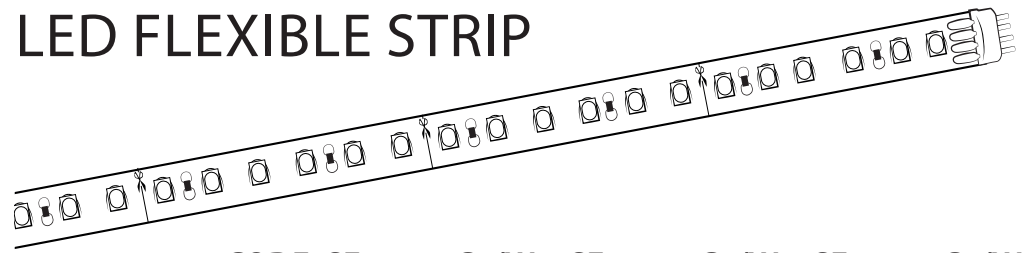


INSTALLATION
INSTRUCTIONS

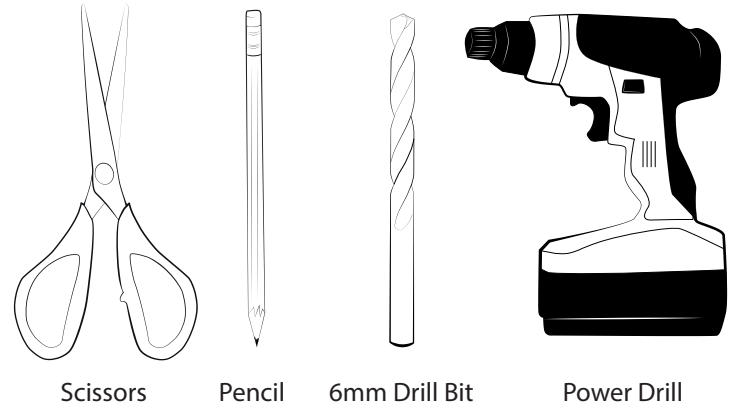
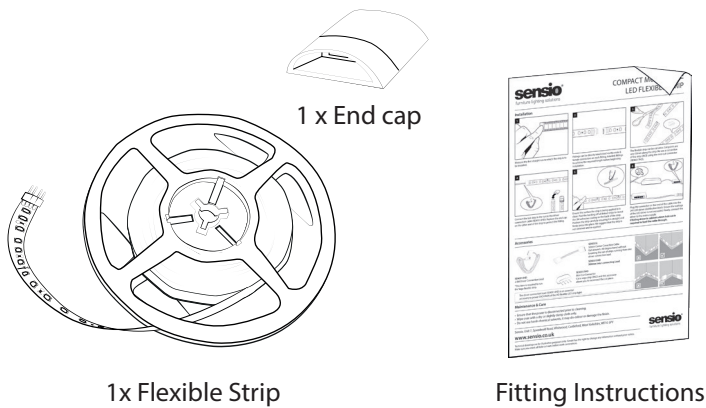


CODE: SE10815C0/W0, SE10825C0/W0, SE10845C0/W0

IMPORTANT: please read these instructions before commencing installation and retain for future reference.

Components

Tools Required



Important safety information

Please read these instructions carefully before attempting to install this product. It is advisable to keep these instructions in a safe place for further reference.

We recommend that you consult a qualified electrician. All electrical installations must be carried out in accordance with current IEE wiring regulations (BS7671).

These products must not be modified, if any modifications are made it may invalidate the warranty and may render the product unsafe. These LED lights operate low voltage (24V).

- Do not wire the individual LED light fittings directly to the mains. This product is for indoor use only. The silicone coated part of the fitting is IP54 rated so is protected against dust and splashing water.
- Install on smooth flat surface(s) only
- **This product requires the SE90314HD Driver Connection Lead – 2500mm. Please ensure you have an adequate number of these cables before you begin installation.**
- **A 24V Driver is required to run this flexible strip. Make sure that the driver used has an adequate maximum wattage.**

Safety instructions

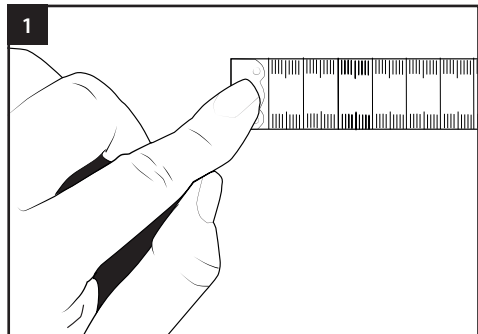
1. Before commencing installation or maintenance, isolate the main electrical supply for the appropriate circuit at the fuse board.
2. This product requires a 24V LED driver which is only suitable for connecting to a 240V 50Hz supply.
3. The light should be mounted onto a secure surface.
4. Position lights where they will not be exposed to steam or splashes etc.
5. Suitable for furniture lighting.
6. When the lamp expires the fitting must be replaced.
7. Class III safety extra low voltage (SELV).

Waste Electrical & Electronic Equipment (WEEE)

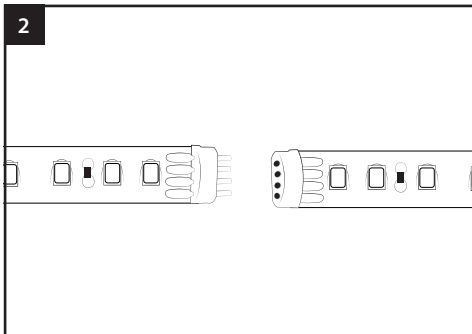
The symbol on the product, or on the document accompanying the product, the crossed out wheelee bin symbol, indicates that this product may not be treated as household waste. Instead it shall be handed over to the applicable collection point for the recycling of electrical and electronic waste.



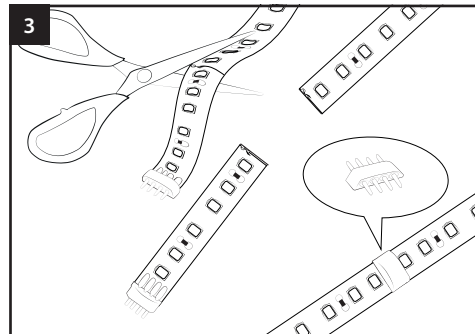
Installation



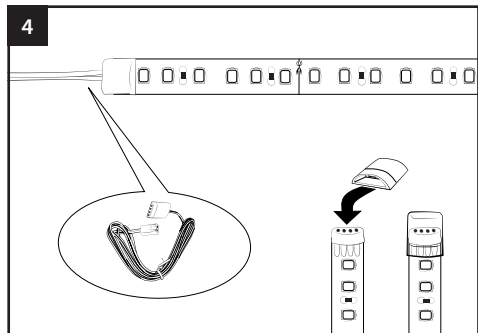
1 Measure the first straight run to which the strip is to be installed.



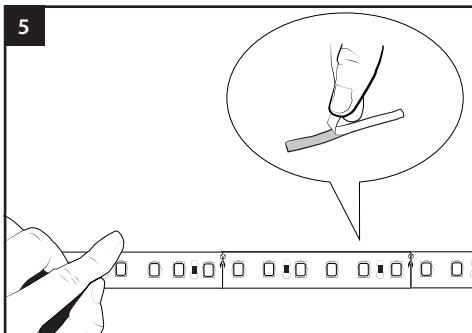
2 Fittings can be directly interlinked via the male & female connectors on each fitting. Interlink fittings to achieve the required length before beginning installation.



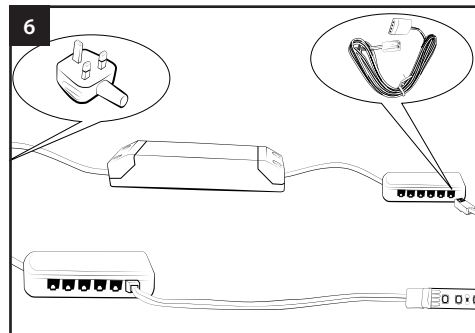
3 The flexible strip can be cut once. Cut points are very 50mm along the strip. Re-use a cut section of the strip ONCE using the mini-cut connector (SE90317HD).



4 Connect the last strip in the run to the driver connection cable (SE90314HD). Replace the end cap on the other end of the strip to protect the fitting.

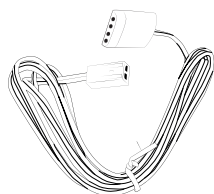


5 Ensure the surface that the strip is being applied to is clean. Peel the backing off all linked strips to reveal the 3M adhesive coating on the back of the strip. Position the strip carefully ensuring it is straight and firmly press into place. We suggest that the strip is not removed and re-applied.

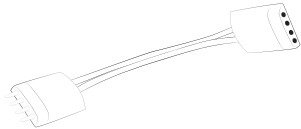


6 Plug the connector on the end of the cable into the 24V LED driver distribution block. Ensure the wattage of the LED driver is not exceeded. Finally, connect the driver to the mains supply.
If hiding driver in cabinet a 6mm hole cut is required to feed the cable through.

Accessories



SE90314HD
2.5m Driver Connection Lead
*This item is required to run the Compact flexible strip.

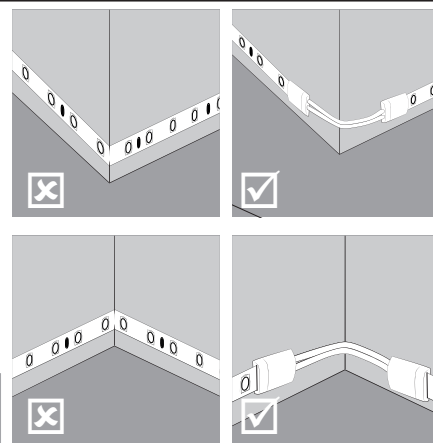


SE90316HD
50mm Corner Connection Cable
Get around a 90 degree bend without breaking the run of strips running from one driver connection lead.



SE90315HD
500mm Inter-connecting Lead

SE90317HD
Mini Cut Connector
Cut a flexible strip ONCE and this accessory allows you to reconnect the cut piece.



The driver connection lead (SE90314HD) is an essential accessory to power EACH RUN of the HD flexible LED strip light.

Maintenance & Care

- Ensure that the power is disconnected prior to cleaning.
- Wipe over with a dry or slightly damp cloth only.
- Do not use harsh chemical solvents, it may dis-colour or damage the finish.

Sensio, Unit 7, Speedwell Road, Whitwood, Castleford, West Yorkshire, WF10 5PY

www.sensio.co.uk