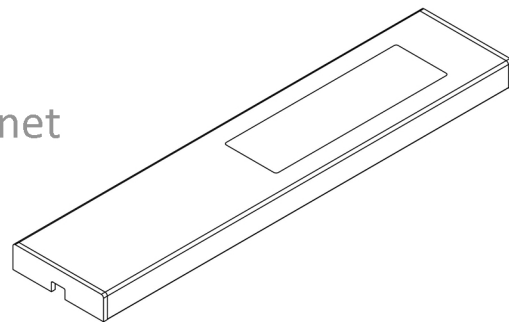


## INSTALLATION INSTRUCTIONS

# Quadra Pro

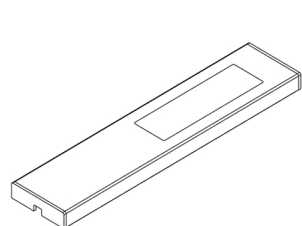
Colour Temperature  
Changeable Under Cabinet  
Spot Lights

**Quadra Pro IR** - SE21092P0  
**Quadra Pro** - SE21192P0  
**Quadra Pro Kit 1** - SE21292P3  
**Quadra Pro Kit 2** - SE21392P3

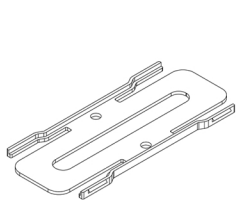


**IMPORTANT:** Please read these instructions before commencing installation and retain for future reference.

### Components



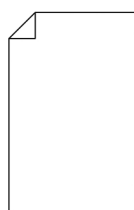
1 x Quadra Light



1 x Mounting Bracket



2 x Screws



1 x Instructions  
Manual

### Tools Required



Pencil



Screwdriver



Ø16 mm  
Drill Bit



Power Drill

### Important Safety Information

Please read these instructions carefully before attempting to install this product. It is advisable to keep these instructions in a safe place for future reference.

We recommend that you consult a qualified electrician. All electrical installation must be carried out in accordance with current IEE wiring regulations (BS7671).

These products must not be modified, if any modification are made, it may invalidate the warranty and may render the product unsafe. These LED light operate low voltage (24V)

Do not wire the individual LED light fittings directly to the mains. This product is for indoor use only. Keep out of moisture and use only in dry rooms.

- If in doubt, installation must be carried out by a qualified electrician.
- Install on smooth flat surface(s) only.
- Do not exceed or stretch the cable length of each LED wire.
- This product is IP20 Rated.
- The wattage for each light is 2.5W. Make sure that the LED driver used with these fittings has an adequate max wattage, which is above 2.5W.

### Safety Instructions

1. Before commencing installation or maintenance, isolate the main electrical supply for the appropriate circuit at the fuse board.
2. This product is only suitable for connecting to a 240V 50Hz supply.
3. The lights should be mounted onto a secure surface.
4. Never exceed the total output of the LED driver.
5. Suitable for furniture lighting.
6. When the lamp expires the fitting must be replaced
7. Class III safety extra low voltage (SELV).

#### Waste Electrical & Electronic Equipment (WEEE)

The symbol on the product, or on the document accompanying the product, the crossed out wheellie bin symbol, indicates that this product may not be treated as household waste. Instead it shall be handed over to the applicable collection point for the recycling of electrical and electronic waste.



**RoHS**  
Compliant ✓

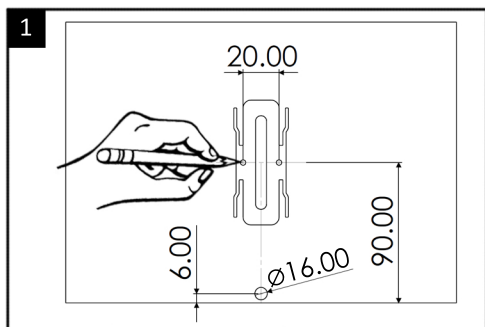


Sensio House, Unit 7, Speedwell Road, Whitwood, Castleford, West Yorkshire, WF10 5PY

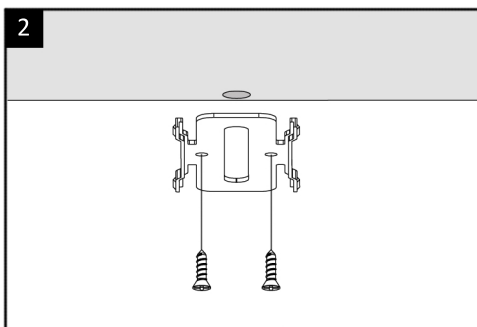
[www.sensio.co.uk](http://www.sensio.co.uk)

Technical drawings for illustration purposes only, Sensio had the right to change any information without prior notice.

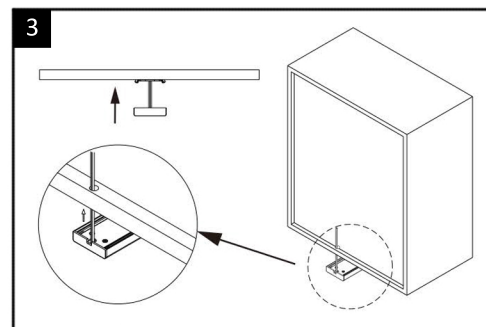
## Installation



Drill a Ø8mm hole into the base panel panel at the back of the cabinet, as shown in the diagram above. This hole is for the cable. Carefully mark the positions for the mounting bracket screws as well.

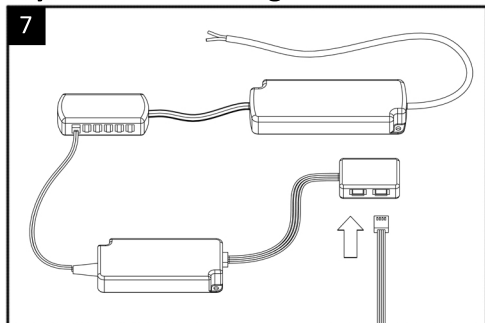


Using the two screws, fix the mounting bracket to the underside of the cabinet.



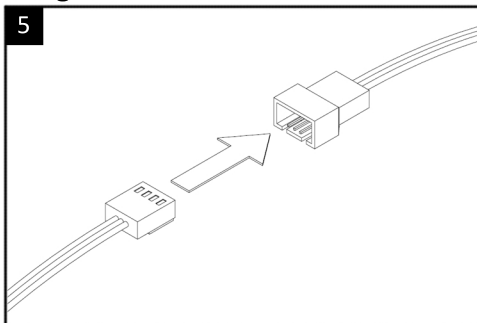
Feed the wire through the Ø8mm hole and then attach the Quadra to the mounting bracket, by simply pushing the fitting gently upwards onto the bracket.

## If you are controlling a run of Quadra Pro lights with a DuoFlex Receiver...



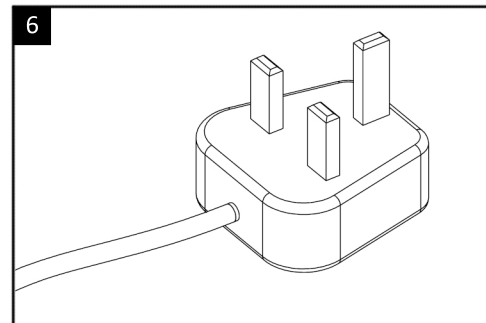
Connect the Quadra Pro to the DuoFlex Receiver distribution block.

**Note:** This is only possible with the SE21192P0.



If you are creating a run of lights, proceed to connect the lights together by inserting the male connectors into the female connectors in a daisy chain fashion.

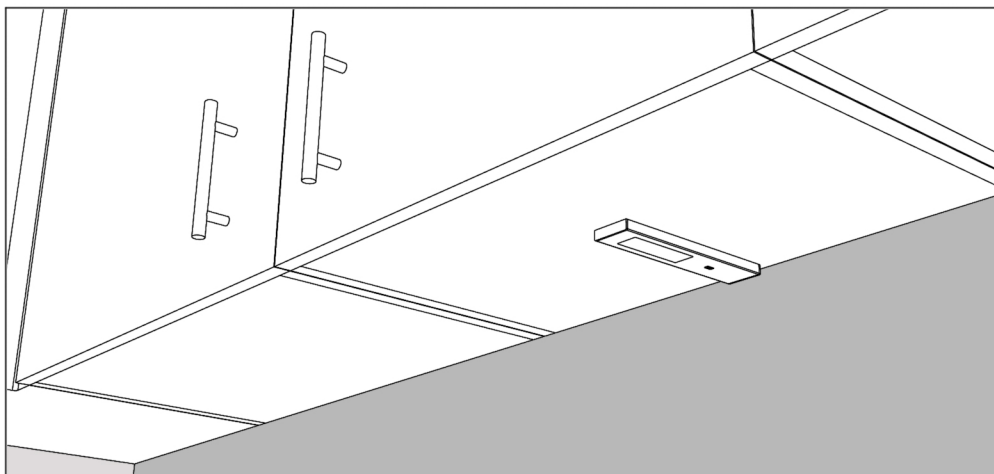
**Note:** This is only possible with the SE21192P0.



Finally, connect the driver to the mains supply or attach a plug.

**Note:** After installation is complete, be sure to follow the installation guide supplied with the DuoFlex Receiver.

## Operation



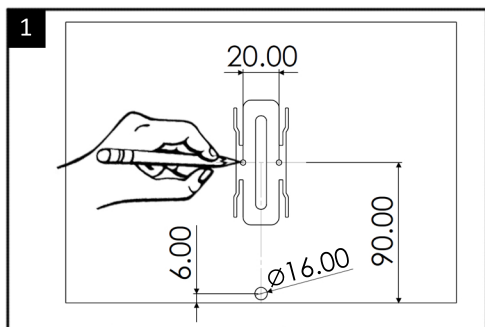
### Essential Parts:

- SE4055 15W LED Driver with 6 Port JB4 Distributor
- SE40556 30W LED Driver with 12 Port JB4 Distributor
- SE4057 60W LED Driver with 12 Port JB4 Distributor
- SE1004100 DuoFlex Receiver
- SE791990 3-In-1 Remote Control
- SE9009 2.5m Extension Cable
- SE240920 Over Cabinet Mounting Bracket

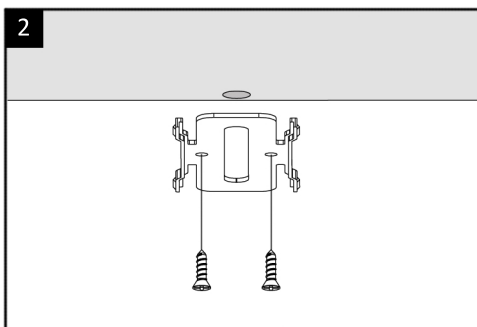
## Maintenance & Care

- Ensure that the power is disconnected prior to cleaning.
- To keep the finish of this product, wipe over with soft cloth periodically.
- Do not use harsh chemical solvents, this may dis-colour or damage the finish.

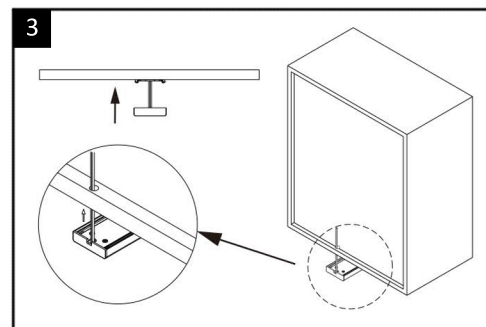
## Installation



Drill a Ø8mm hole into the base panel panel at the back of the cabinet, as shown in the diagram above. This hole is for the cable. Carefully mark the positions for the mounting bracket screws as well.

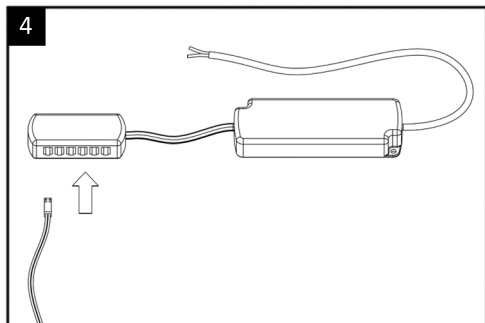


Using the two screws, fix the mounting bracket to the underside of the cabinet.



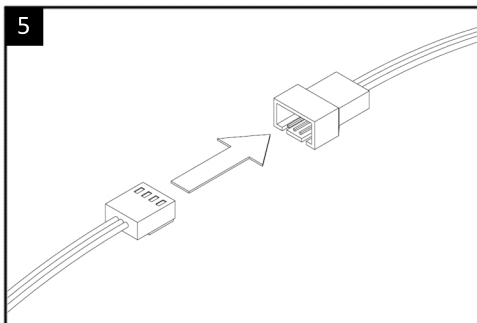
Feed the wire through the Ø8mm hole and then attach the Quadra to the mounting bracket, by simply pushing the fitting gently upwards onto the bracket.

## If you are controlling a run of Quadra Pro lights with the Quadra Pro IR Sensor...



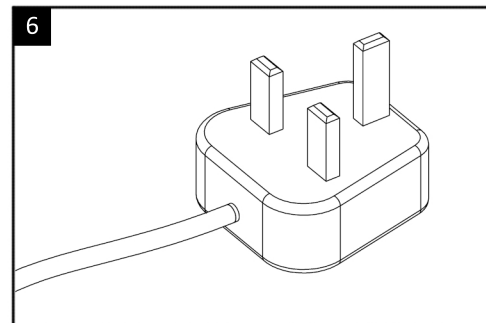
Connect the Quadra to the JB4 driver distribution block.

**Note:** If you are installing a run of Quadra lights, the SE21092P0, which acts as the master light, should be positioned either at the beginning or the end of the run, depending on the desired position of the driver.



If you are creating a run of lights, proceed to connect the lights together by inserting the male connectors into the female connectors in a daisy chain fashion.

**Note:** This is only possible with the SE21192P0.

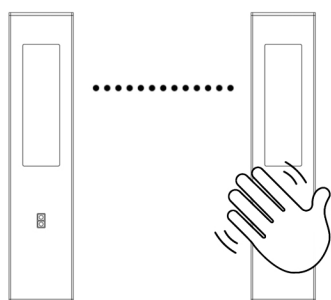


Finally, connect the driver to the mains supply or attach a plug.

## Operation

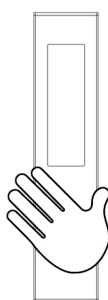
### On/Off Function

To turn your Quadra lights on/off simply wave your hand underneath the IR sensor on the master light.



### Colour Change Function

To change the colour temperature of your Quadra Pro lights, simply hold your hand over the IR sensor and you will see them begin to change colour.



### Essential Parts:

- SE4055 15W LED Driver with 6 Port JB4 Distributor
- SE40556 30W LED Driver with 12 Port JB4 Distributor
- SE4057 60W LED Driver with 12 Port JB4 Distributor
- SE9009 2.5m Extension Cable
- SE240920 Over Cabinet Mounting Bracket

## Maintenance & Care

- Ensure that the power is disconnected prior to cleaning.
- To keep the finish of this product, wipe over with soft cloth periodically.
- Do not use harsh chemical solvents, this may dis-colour or damage the finish.