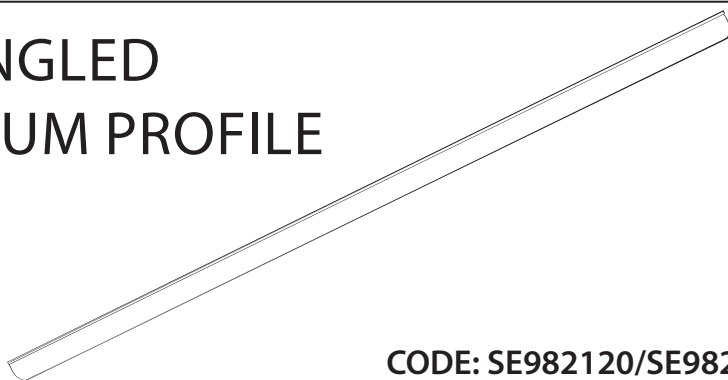


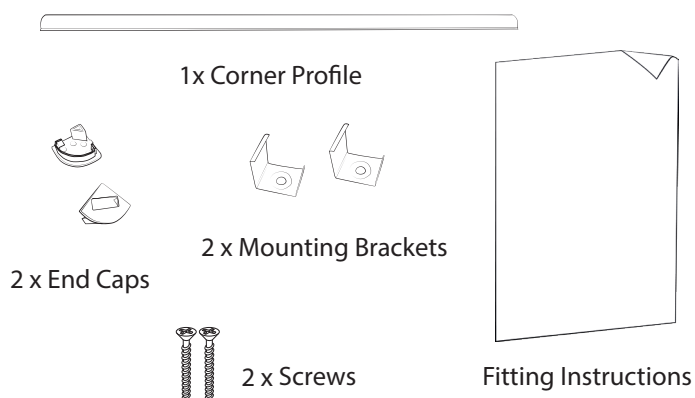
INSTALLATION INSTRUCTIONS



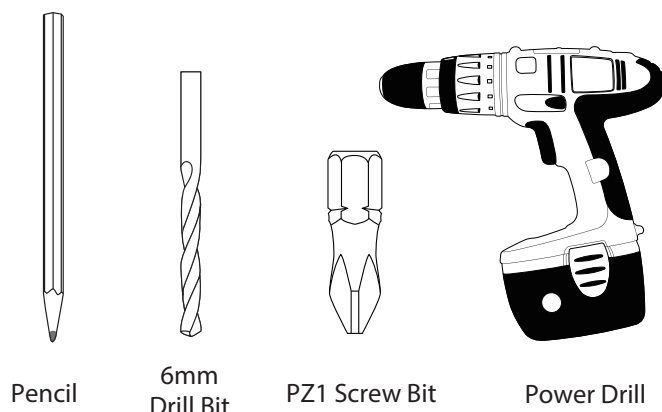
CODE: SE982120/SE982220

IMPORTANT: please read these instructions before commencing installation and retain for future reference.

Components



Tools Required



Important safety information

Please read these instructions carefully before attempting to install this product. It is advisable to keep these instructions in a safe place for further reference.

We recommend that you consult a qualified electrician.
All electrical installations must be carried out in accordance with current IEE wiring regulations (BS7671).

Do not wire the individual LED lights used inside this fitting directly to the mains.

This product is for indoor use only. Keep out of moisture and use only in dry rooms.

- Install on smooth flat surface(s) only.

Safety instructions

1. Before commencing installation of the internal lighting, isolate the main electrical supply for the appropriate circuit at the fuse board. Ensure the same is done when conducting maintenance.
2. Position this fitting where it will not be exposed to steam or splashes etc.
3. Suitable for furniture lighting.

Waste Electrical & Electronic Equipment (WEEE)

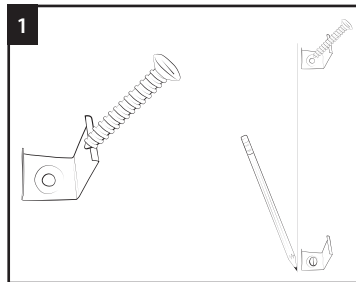
The symbol on the product, or on the document accompanying the product, the crossed out wheellie bin symbol, indicates that this product may not be treated as household waste. Instead it shall be handed over to the applicable collection point for the recycling of electrical and electronic waste.



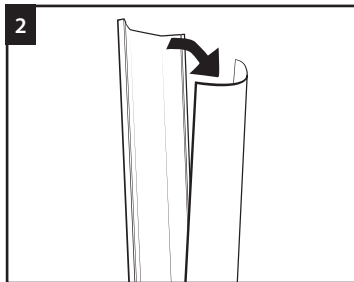
RoHS ✓
Compliant



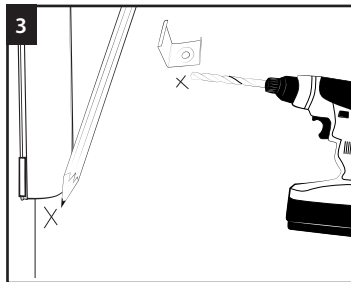
Installation



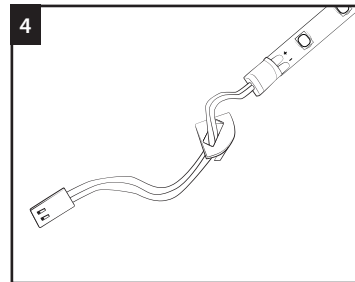
Position and secure the mounting brackets in place using the flat headed screws provided (accessories are found in the end cap of each tube the profile is supplied within, please ensure you remove the accessories before discarding the packaging).



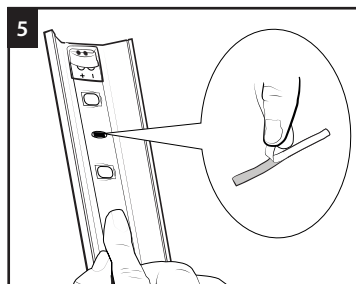
Slide the diffuser cover out of the aluminium profile.



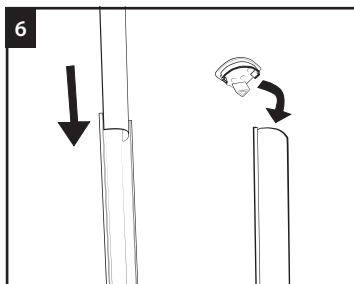
Press the aluminium profile into the mounting brackets to confirm the position of the cable hole in the cabinetry. Ensure you keep the position of the hole as close to the end of the profile as possible. Remove the aluminium and drill a suitable size hole through the cabinet.



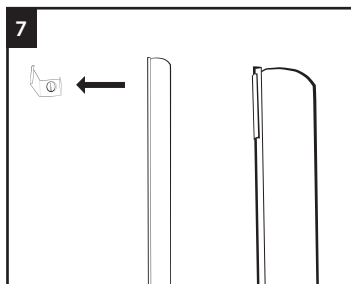
Connect the end of the flexible strip to the driver connection cable. Feed the JB4 connector (the plug which fits into the port on the driver) through.



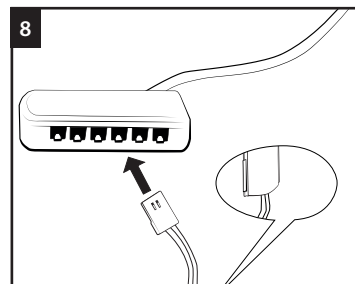
Remove the paper protecting the adhesive on the back of the flexible strip, position the strip carefully, ensuring it is straight and firmly press into place. Once the strip is in place we suggest that it is not removed.



Slide the plastic diffuser back into the profile and put the end caps on both ends (ensuring you have fed the cable through one end cap as per point 4).

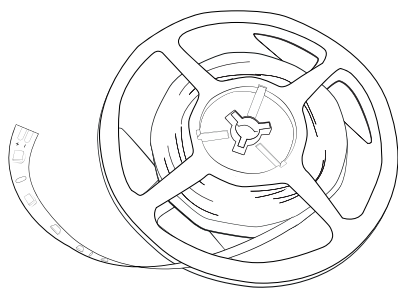


Press the aluminium profile into the fixed mounting brackets.

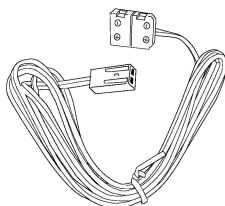


Insert the connector on the end of the driver connection lead into one of the ports on the driver. Follow the driver or flexible strip installation instructions to connect the LED driver to the mains as required.

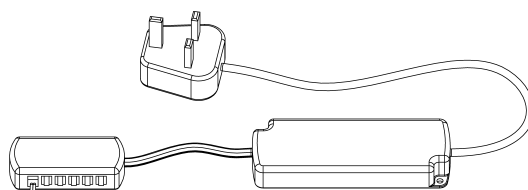
Use with



Primo, Viva or Compact flexible strip lights



Relevant driver connection lead



Relevant driver and any optional lighting control

Maintenance & Care

- Ensure that the power is disconnected prior to cleaning.
- To keep the finish of this product, wipe over with soft cloth periodically.
- Do not use harsh chemical solvents, it may dis-colour or damage the finish.

Sensio, Unit 7, Speedwell Road, Whitwood, Castleford, West Yorkshire, WF10 5PY

www.sensio.co.uk

Technical drawings are for illustrative purposes only. Sensio has the right to change any information without prior notice. Make sure you check all hole cut outs before work commences.