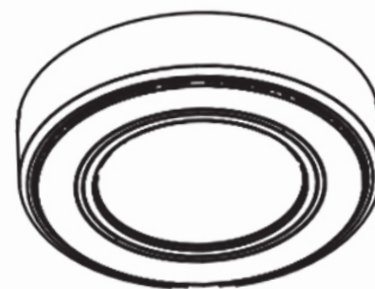


HYPE - HD LED RECESS/SURFACE LIGHT

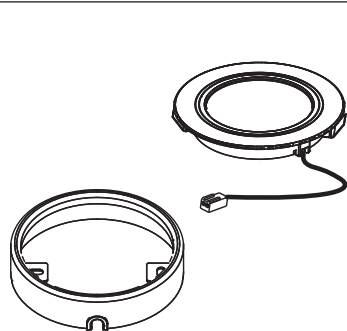


CODE: SE9005HDSS

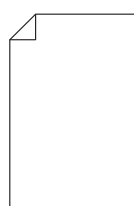
IMPORTANT: please read these instructions before commencing installation and retain for future reference.

Components

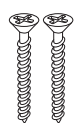
Tools required



1 x SE9005HDSS HD LED Recess Light
with 2.5m cable & Surface Spacer



1 x Fitting Instructions



2 x Screws



Ø 60mm hole opener



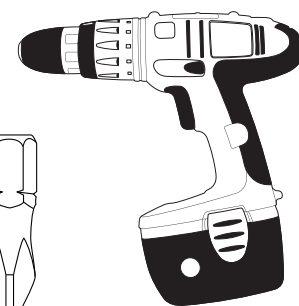
Pencil



9-11mm
Bit Drill Bit



PZ1 Screw



Power Drill

Important safety information

Please read these instructions carefully before attempting to install this product. It is advisable to keep these instructions in a safe place for further reference.

We recommend that you consult a qualified electrician. All electrical installations must be carried out in accordance with current IEE wiring regulations (BS7671).

These products must not be modified, if any modifications are made, it may invalidate the warranty and may render the product unsafe. These LED lights operate low voltage (24V).

Do not wire the individual LED light fittings directly to the mains. This product is for indoor use only. Keep out of moisture and use only in dry rooms.

- If in doubt installation must be carried out by a qualified electrician.
- Install on smooth flat surface(s) only.
- The Wattage of this product is 1.65W. Make sure that the LED driver used with these fittings has an adequate max wattage.
- We recommend using the SE40555 15W LED Driver with this fitting. You will be able to run a maximum of 6 fittings per driver. Alternatively, use the SE40556 30W LED Driver. A maximum of 12 fittings can be run from this driver.

Safety instructions

1. Before commencing installation or maintenance, isolate the main electrical supply for the appropriate circuit at the fuse board.
2. This product requires a 24V LED driver.
3. The light should be mounted onto a secure surface.
4. Position lights where they will not be exposed to steam or splashes etc.
5. Suitable for furniture lighting.
6. When the lamp expires the fitting must be replaced.
7. Class III safety extra low voltage (SELV).

Waste Electrical & Electronic Equipment (WEEE)

The Symbol on the product, or on the document accompanying the product, the crossed out wheelee bin symbol, indicated that this product may not be treated as household waste. Instead it shall be handed over to the applicable collection point for the recycling of electrical and electronic waste.

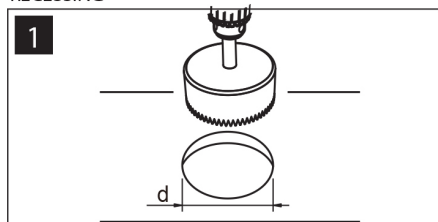


RoHS ✓
Compliant

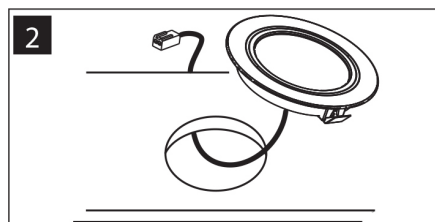


Installation

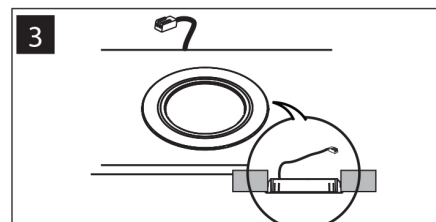
RECESSING



Drill an installation hole of 60mm Ø

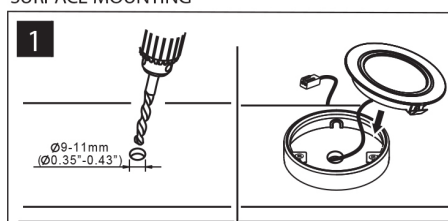


Feed the attached cable through the cut hole and fix the recessed light into place.

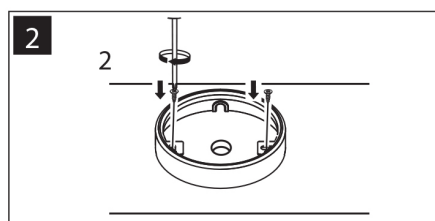


The JB4 plug connected to the end of the cable is then to be plugged into the distributor block on the LED driver. Do not exceed driver wattage.

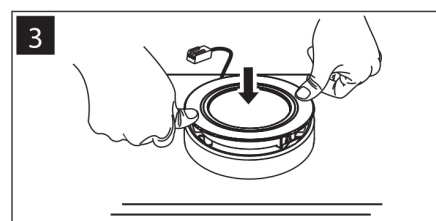
SURFACE MOUNTING



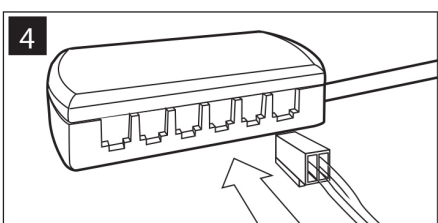
Create an access hole of 10mm Ø to feed the cable through.



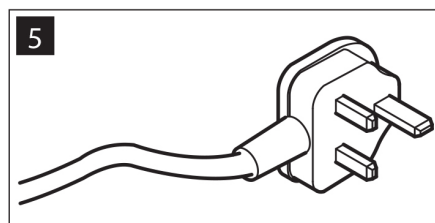
Fix the collar to the unit using 2 fixing screws.



Push the lamp back into the collar as before



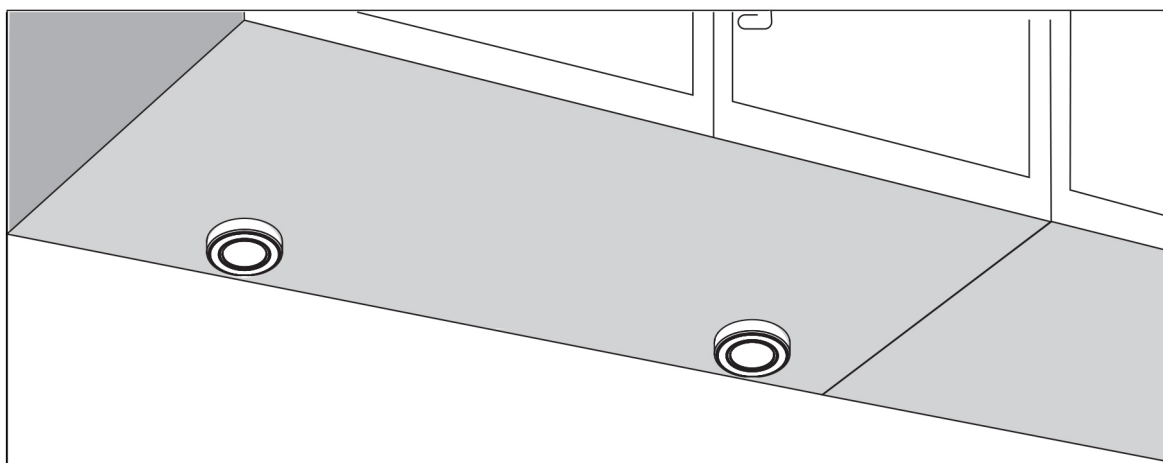
Plug the white connector on the end of the cable into the 24V LED driver.



Finally wire the LED driver to 240V mains supply.

Beware not to exceed the wattage of the LED driver, this is displayed on the driver.

Operation



The SE9005HDSS LED under cabinet lights are to be individually connected back to the distribution block ports on the driver.

Maintenance & Care

- Ensure that the power is disconnected prior to cleaning.
- To keep the finish of this product, wipe over with soft cloth periodically.
- Do not use harsh chemical solvents, it may dis-colour or damage the finish.