

Technical Leaflet

EGGERSeal sealant and adhesive

EGGERSeal sealant and adhesive is specifically designed for use when joining worktop corner joints and fitting splashbacks and upstands. EGGERSeal is colour matched to EGGER worktop, splashback and upstand decors to give a seamless and waterproof finish and is available in 13 different colours. The contents of a 20g tube (available only in the EGGER Worktops installation kit) is enough to seal a corner joint length of 650 mm. EGGERSeal is also available in a 290 ml cartridge.

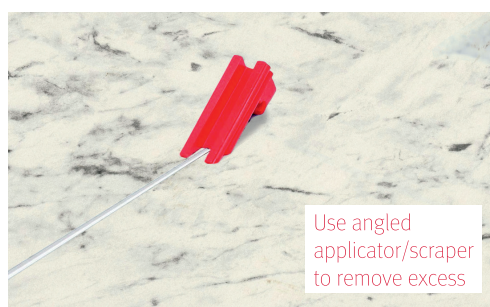
Product	Colour	Dimensions	Packaging
EGGERSeal	Black Stone	20g Tube (included in Worktops Installation Kit) or 290 ml Cartridge	Tube packed in Worktops Installation Kit
	Brown Grey Oak		
	Dark Graphite		
	Dark Woodmix		
	Light Woodmix		
	Metal Grey		
	Natural Oak		Cartridges packed in cardboard boxes (12 per box)
	Silk Grey		
	Steel Grey		
	Stone Beige		
	Stone White		
	Titan Grey		
	Titanium White		

Properties/ Product Features

- High performance, toughened polymer technology
- 10 - 15 minute open time
- Cure time: 15 hours for worktop joints/ 24 hours for splashbacks and upstands
- Waterproof and flexible (once cured)
- Very little shrinkage
- Shelf life (unopened): 12 months (20g tube)/ 18 months (290 ml cartridge)
- Store in a ventilated location between 5 – 25°C
- Solvent-free and odourless
- Adheres to a wide range of surfaces – Laminate, Quartz, Stainless Steel, Glass and many others

Processing Steps

1. Push through the membrane seal of the EGGERSeal tube and screw on the applicator
2. Ensure the area to be sealed is dry and free from dust and grease
3. Add a constant bead of EGGERSeal to the edge of the jointing biscuits and position in place on one side of the worktop joint
4. Using the applicator as a guide apply a constant bead around the worktop edge
5. Bring the joint together and tighten the worktop bolts (EasiBolts or Toggle Bolts)
6. Remove any excess using the angled scraper side of the applicator
7. Clean using a dry lint free cloth
8. For more detailed instructions, please refer to the fitting guide included in every EGGER Worktops Installation Kit.



MORE FROM WOOD.



EGGERSeal Colour Match Guide

Decor code	Structure	Worktop decor name	Size	EGGERSeal name
F120	ST76	Light Grey Metal Rock	16 mm / 38 mm	Metal Grey
F628	ST16	Silver Grey Metal Slate	16 mm / 38 mm	Dark Graphite
F638	ST16	Chromix Silver	16 mm / 38 mm	Metal Grey
F204	ST75	White Carrara Marble	16 mm / 38 mm	Stone White
F205	ST9	Anthracite Pietra Grigia	16 mm / 38 mm	Titan Grey
F206	ST9	Black Pietra Grigia	16 mm / 38 mm	Black Stone
F076	ST75	Grey Braganza Granite	25 mm	Metal Grey
F095	ST87	Grey Siena Marble	25 mm	Silk Grey
F121	ST87	Anthracite Metal Rock	25 mm	Steel Grey
F629	ST16	Black Gold Metal Slate	25 mm	Black Stone
F637	ST16	White Chromix	25 mm	Stone White
F812	ST9	White Levanto Marble	25 mm	Stone White
W1000	ST76	Premium White	38 mm	Titanium White
H193	ST12	Oak Butcherblock	38 mm	Natural Oak
H194	ST12	Walnut Butcherblock	38 mm	Dark Woodmix
H1146	ST10	Grey Bardolino Oak	38 mm	Natural Oak
H1176	ST37	White Halifax Oak	38 mm	Stone Beige
H1180	ST37	Natural Halifax Oak	38 mm	Natural Oak
H1313	ST10	Grey Brown Whiteriver Oak	38 mm	Titan Grey
H1336	ST37	Sand Grey Glazed Halifax Oak	38 mm	Stone Beige
H1401	ST22	Cascina Pine	38 mm	Stone Beige
H1486	ST36	Pasadena Pine	38 mm	Titan Grey
H2033	ST10	Dark Hunton Oak	38 mm	Dark Woodmix
H3176	ST37	Pewter Halifax Oak	38 mm	Brown Grey Oak
H3303	ST10	Natural Hamilton Oak	38 mm	Light Woodmix
F074	ST75	Light Grey Valmasino Marble	38 mm	Metal Grey
F127	ST75	Travertin Tavolo Taupe	38 mm	Silk Grey
F186	ST9	Light Grey Chicago Concrete	38 mm	Metal Grey
F242	ST10	Anthracite Jura Slate	38 mm	Dark Graphite
F486	ST76	White Sparkle Grain	38 mm	Stone White
F487	ST76	Grey Sparkle Grain	38 mm	Steel Grey
F490	ST76	Black Sparkle Grain	38 mm	Dark Graphite
F642	ST16	Bronze Chromix	38 mm	Titan Grey
F823	ST10	Light Cefalu Concrete	38 mm	Silk Grey

All decors shown and mentioned are reproductions.

Additional documents / Product Information

You will find further information in the following documents

- Processing Instructions and other Technical Data Sheets which can be found at www.egger.com/worktops
- Fitting Guide (Worktops Installation Kit)